



I misteri dell'ilo polmonare *compatto o pastoso*

Annemilia del Ciello

TUTTO QUELLO
CHE AVRETE VOLUTO SAPERE
SULL'RX
TORACE STANDARD
E NON AVETE MAI OSATO CHIEDERE

**AULA MAGNA
DEL RETTORATO**
Università degli Studi "G. d'Annunzio"
5 maggio 2017 - Chieti

Dipartimento di Scienze Radiologiche
Fondazione Policlinico A. Gemelli
Università Cattolica del Sacro Cuore
Roma



COMPATTO

compatto

[com-pàt-to]

A agg.

1 Strettamente unito nelle sue parti: *legno, tessuto c.; le schiere combattevano compatte; la folla rimase compatta*

2 fig. Unito, concorde nei sentimenti, nelle aspirazioni, nell'azione: *il popolo si levò c. contro il tiranno; un partito politico c.*



PASTOSO

pastoso

[pa-stó-so]

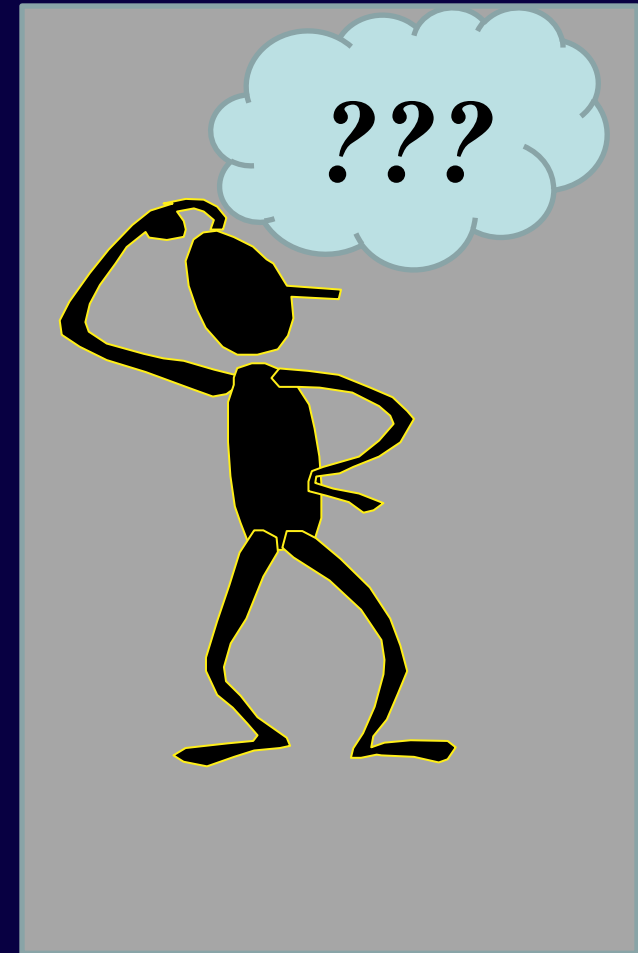
agg.

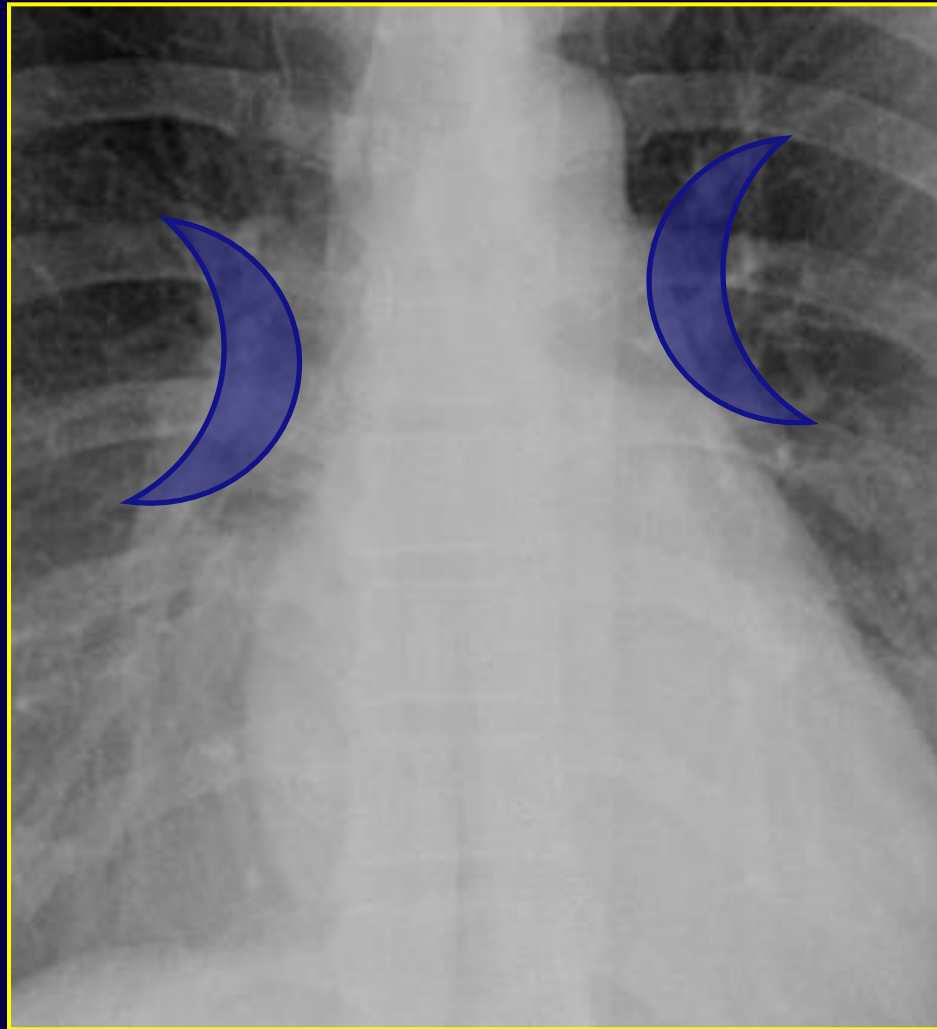
1 Che ha la morbidezza di una pasta: *materia pastosa come cera; terra grassa e pastosa*

2 fig. Che è privo di asprezza; morbido, delicato: *tinte, toni pastosi*

|| Vino pastoso, dolce, abboccato, di sapore delicato

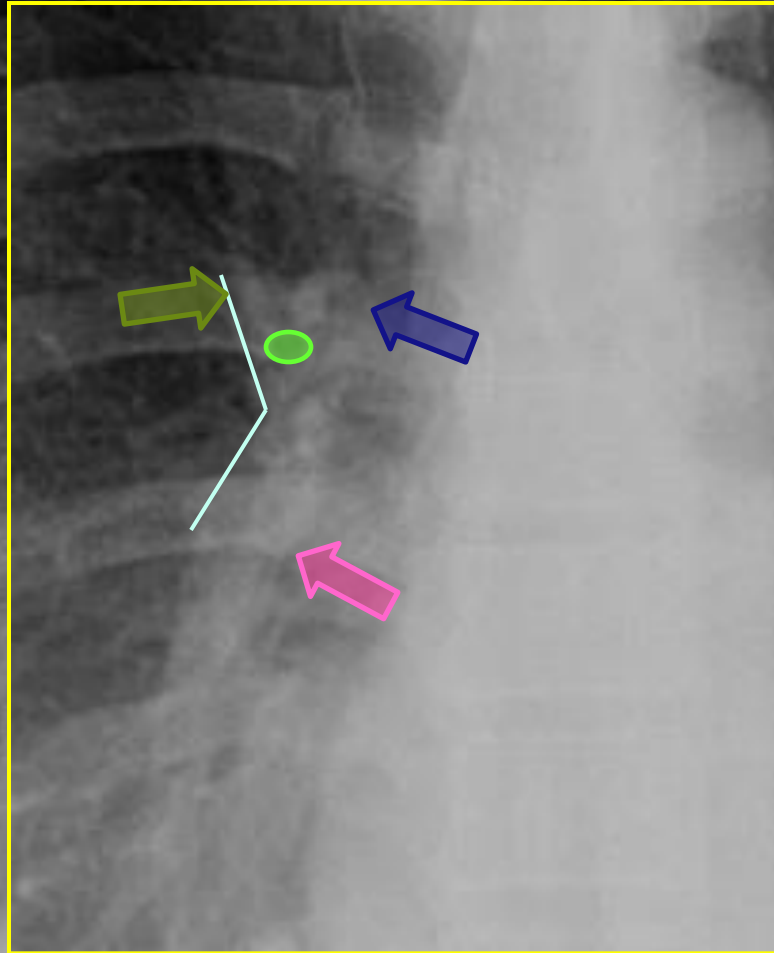
|| Voce pastosa, piena e calda





- Porte di passaggio di bronchi e vasi tra il mediastino e i polmoni
- Aree radiopache
- Forma a "mezza luna"
 - ✓ parte centrale
 - ✓ due estremità o corni
- Arterie e Vene Polmonari
Bronchi di calibro maggiore

Ilo polmonare dx è più caudale del sn (~ 1 cm)



Corno superiore

- ✓ arteria pulm. lobare sup.
- ✓ vena polmonare sup.

bronco segm anteriore
visibile nell'80%

Corno inferiore

- ✓ arteria interlobare

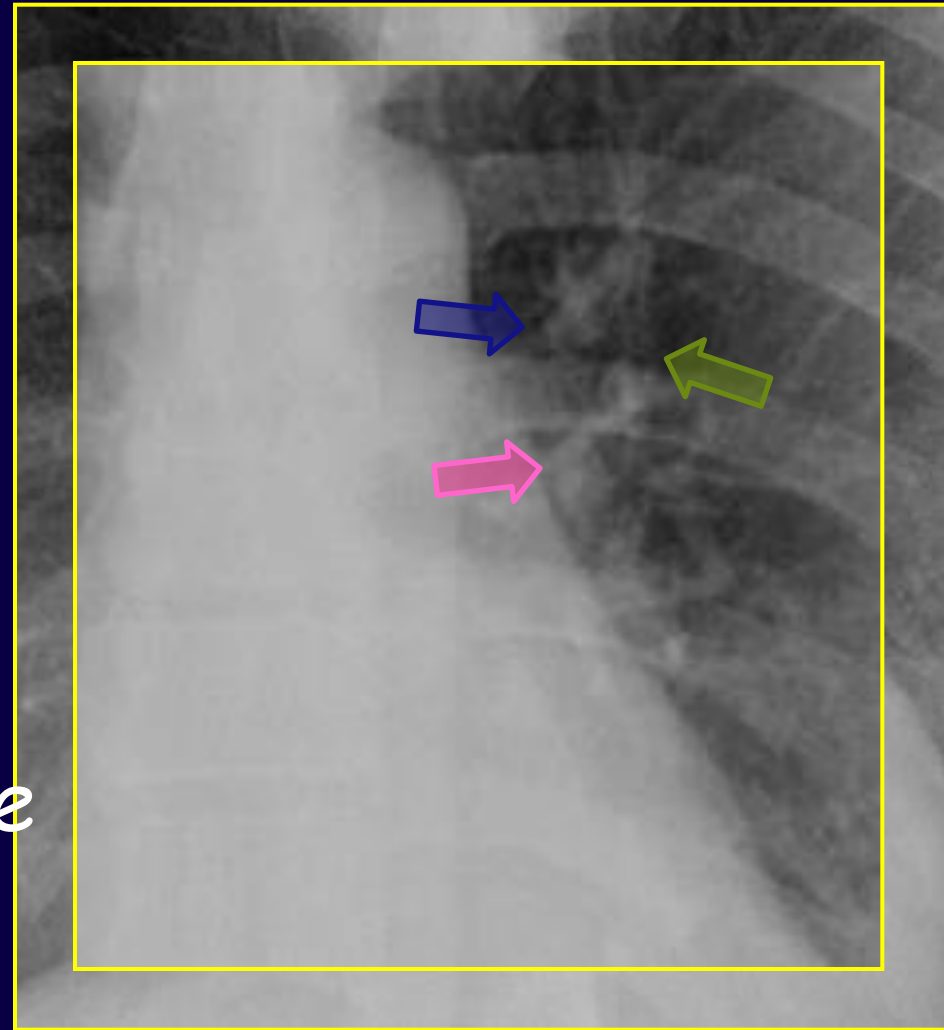
Angolo Ilare tra vena pulm. sup. e art. interlobare

Corno superiore

- ✓ *arteria polm. lobare sup.*
- ✓ *vena polmonare sup.*

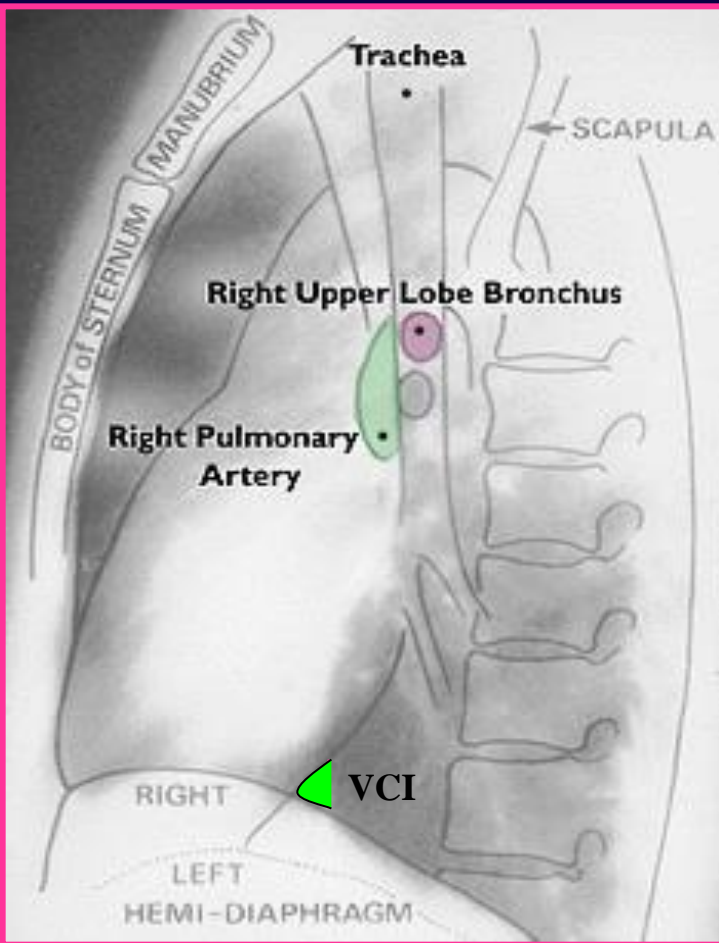
Corno inferiore

- ✓ *arteria polm. discendente*

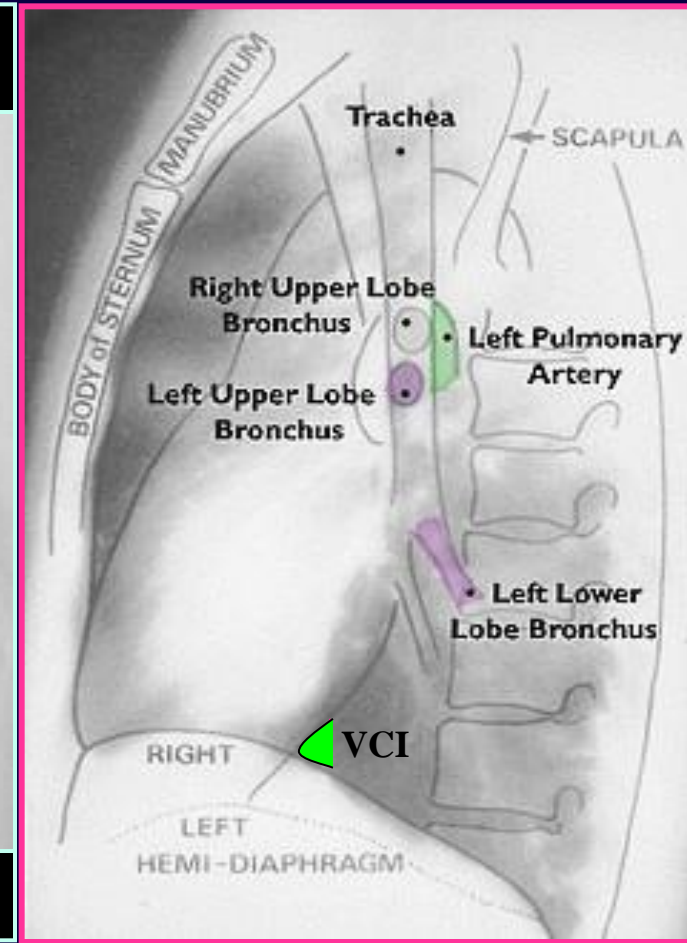
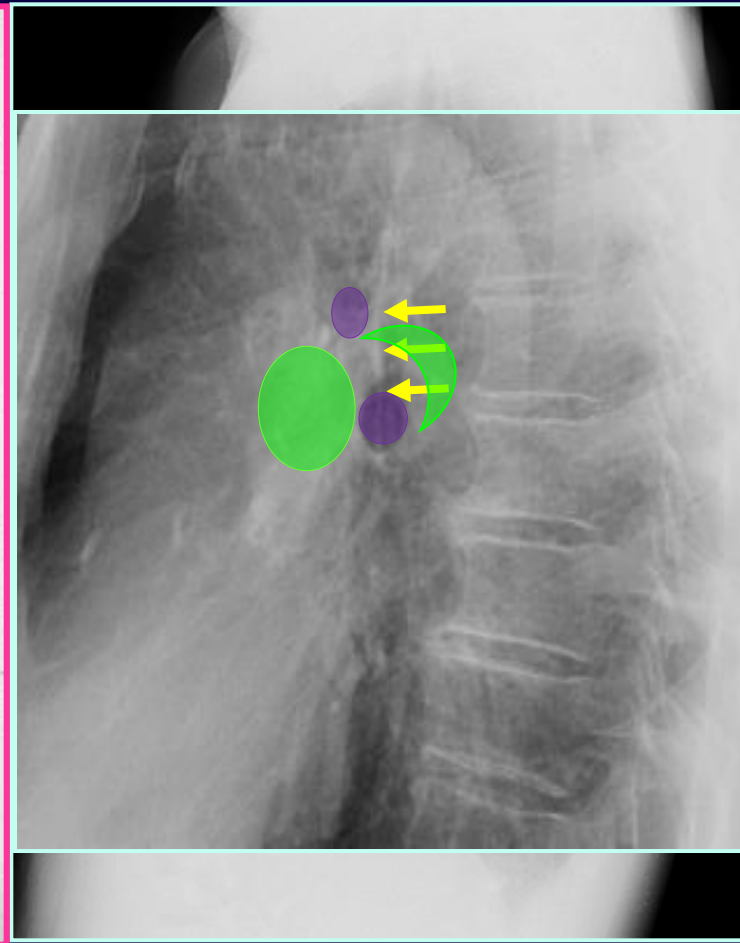


Anatomia ilo - Proiezione laterale

Ilo polmonare



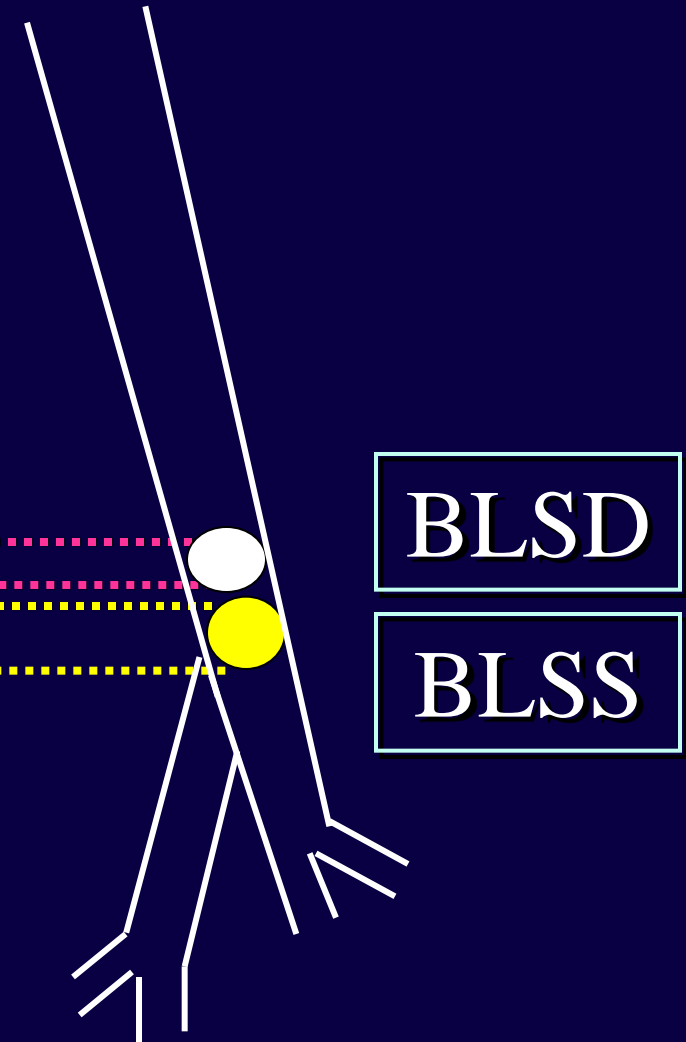
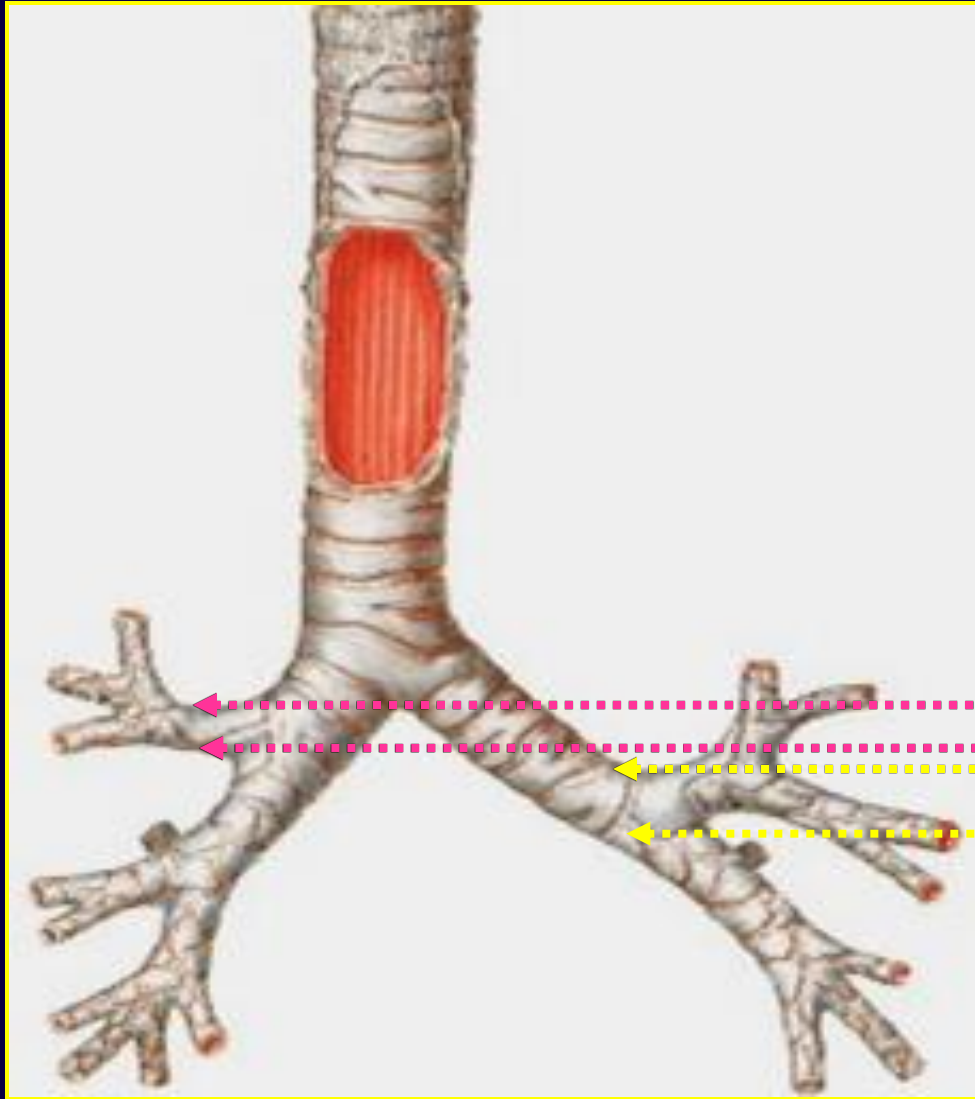
DX



SN

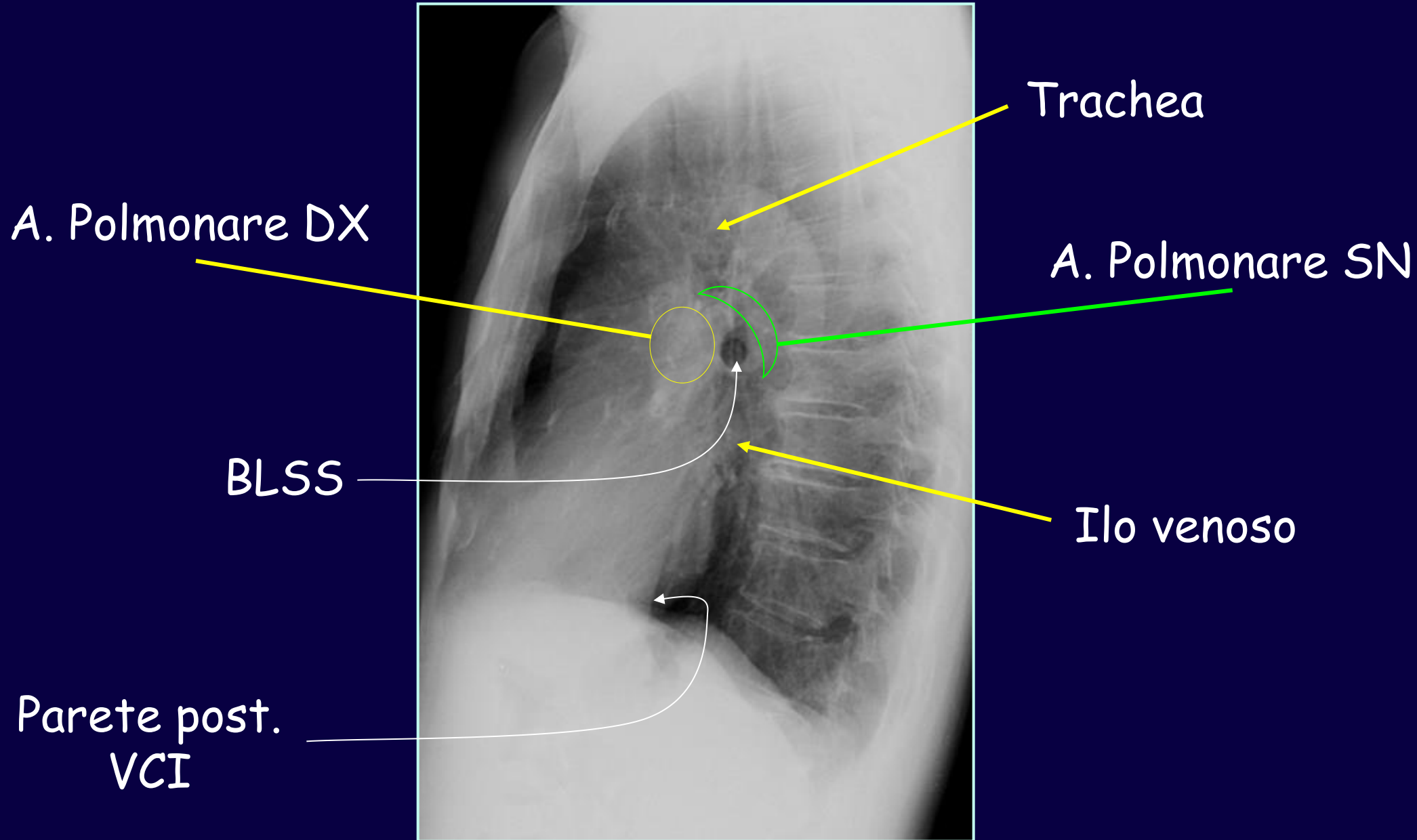
Anatomia ilo - Proiezione laterale

Ilo polmonare



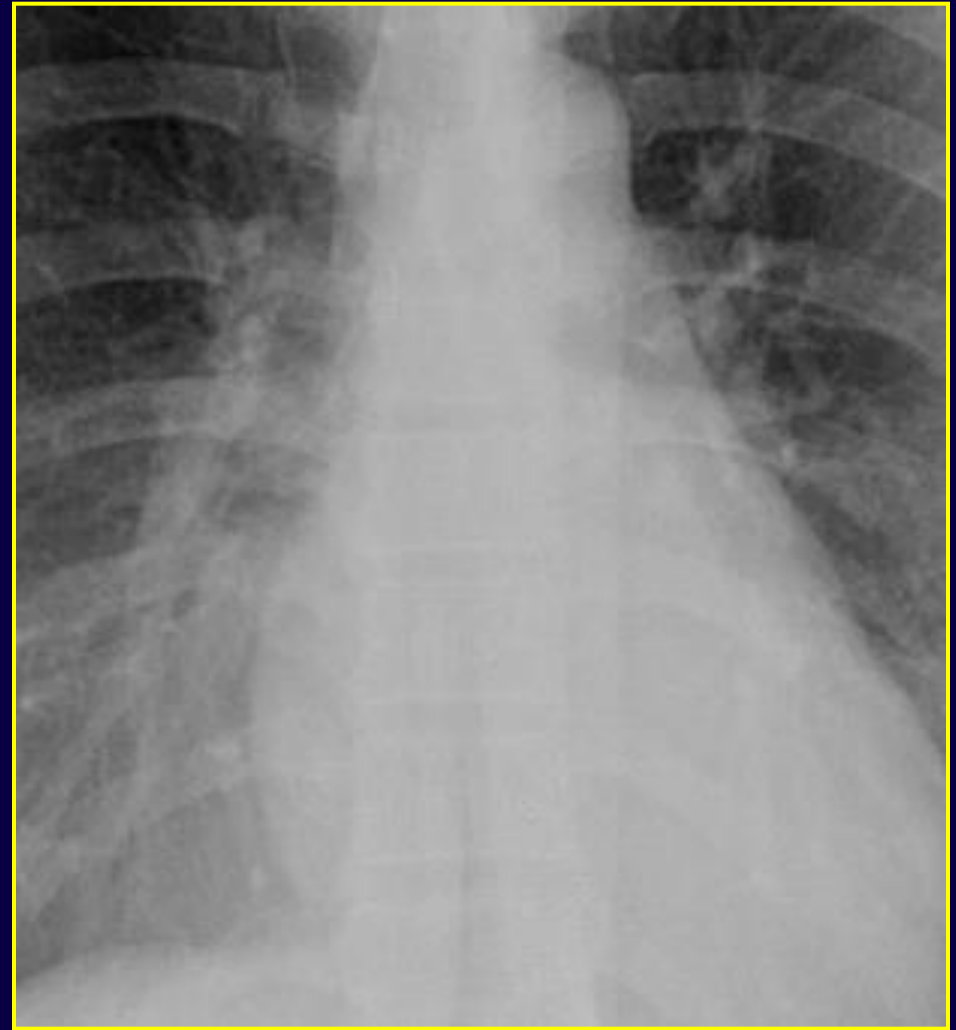
Anatomia ilo - Proiezione laterale

Ilo polmonare



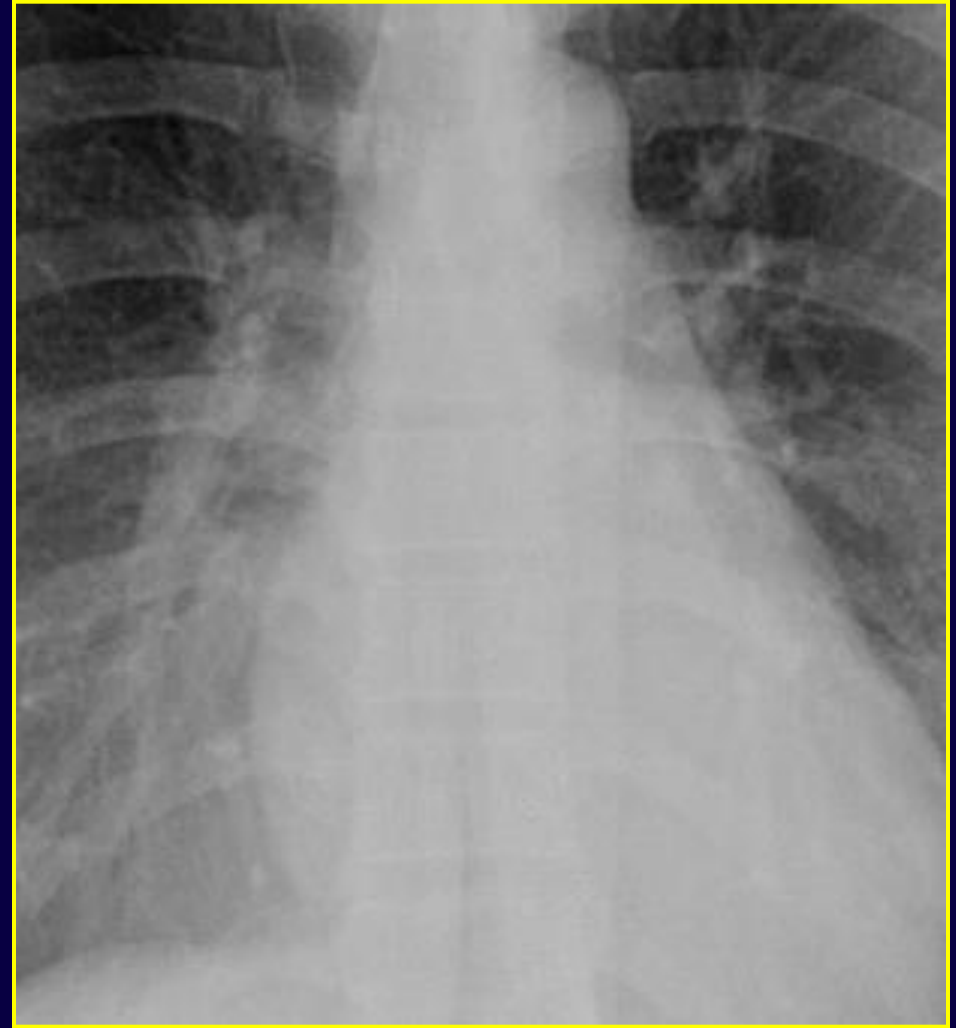
Valutazione ili

- ✓ *Dimensioni*
- ✓ *Radiopacità*
- ✓ *Forma*
- ✓ *Sede*

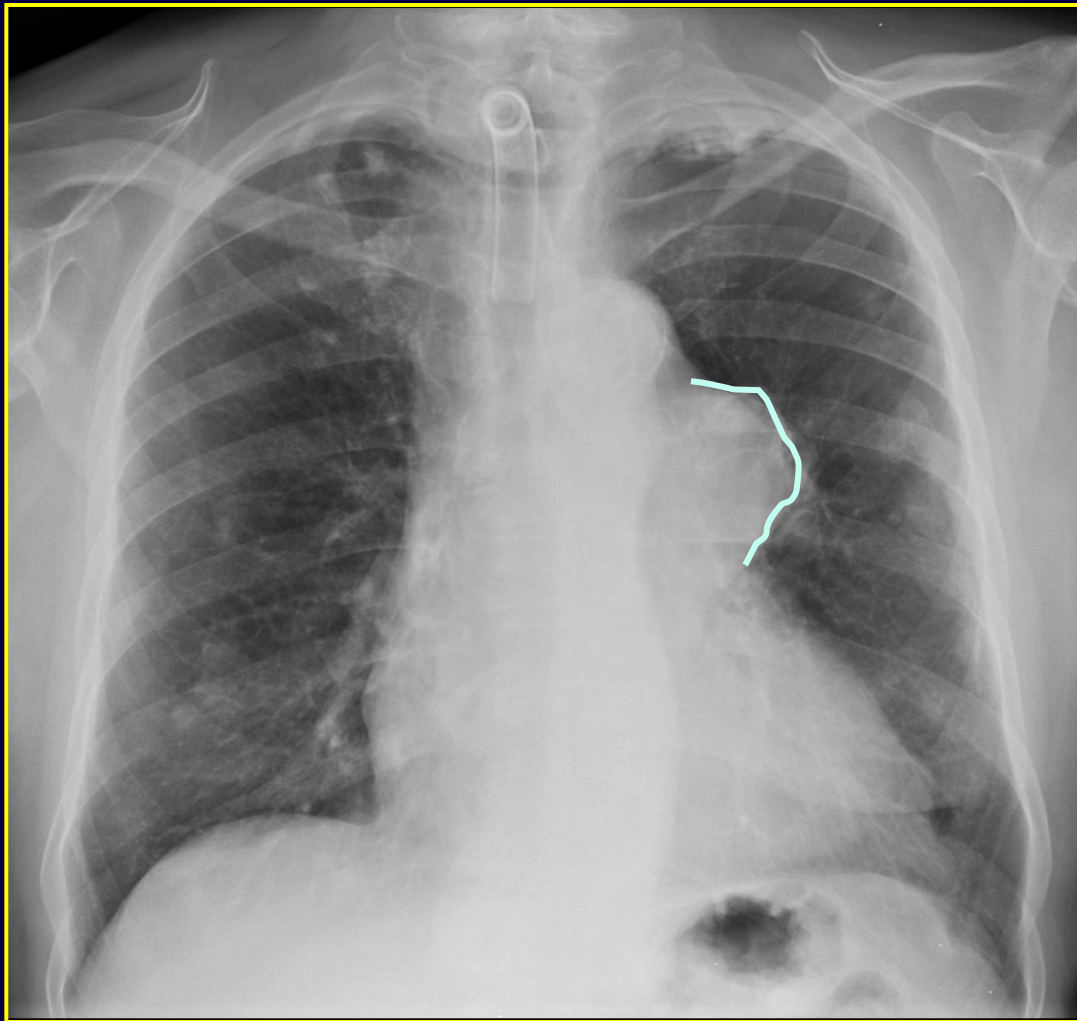


Valutazione ili

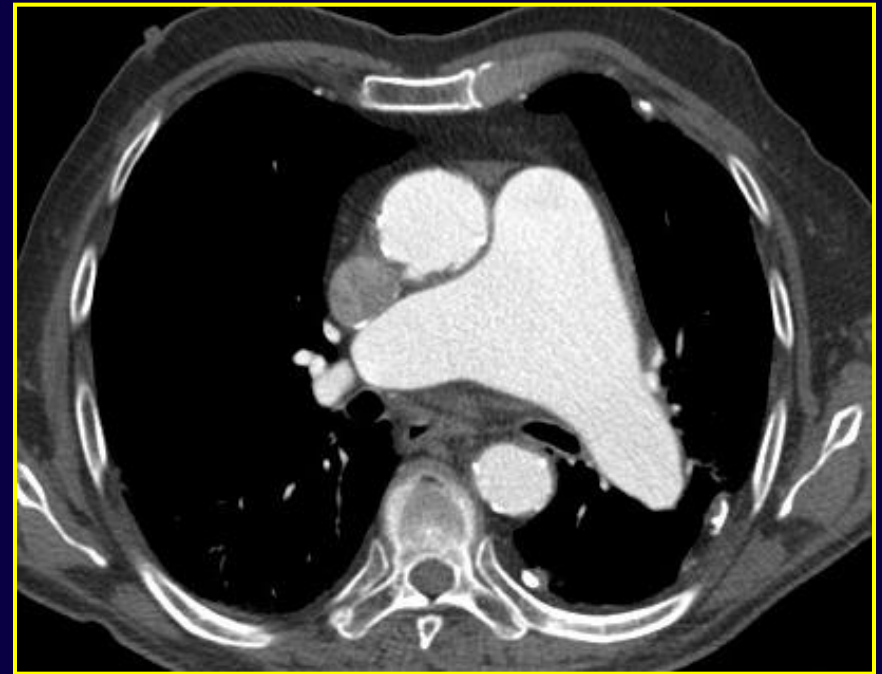
- ✓ *Dimensioni*
- ✓ *Radiopacità*
- ✓ *Forma*
- ✓ *Sede*



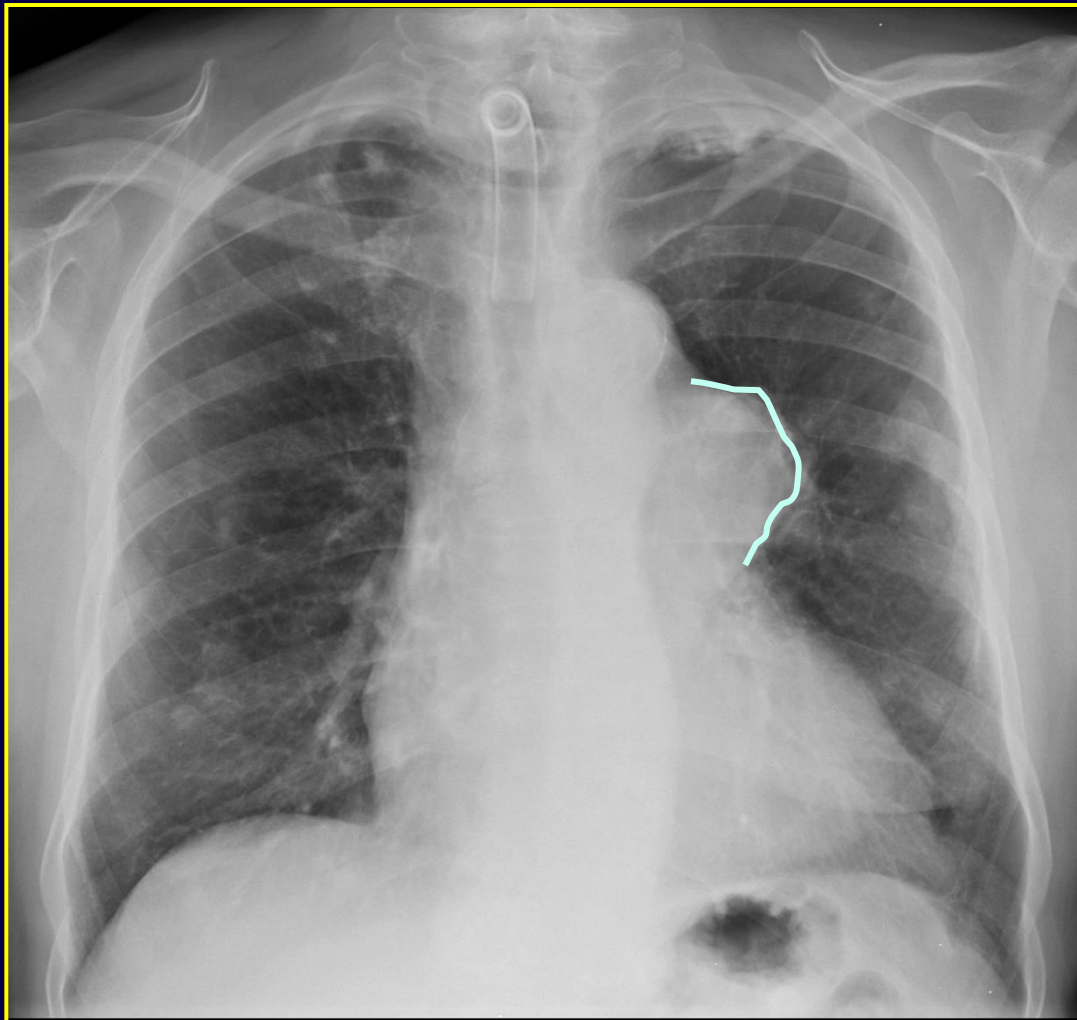




✓ *ingrandimento
ilare sn*



Dilatazione tronco comune e arterie polmonari



✓ *ingrandimento
ilare sn*

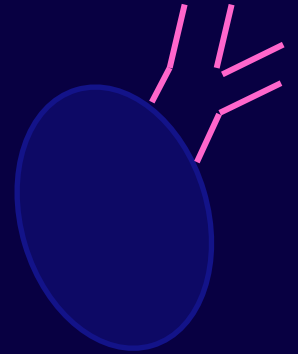


*Segno della
convergenza
all'ilo*

Segno della convergenza all'ilo

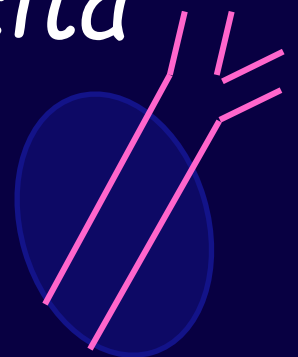
✓ *i vasi convergono e si interrompono sul profilo esterno dell'opacità*

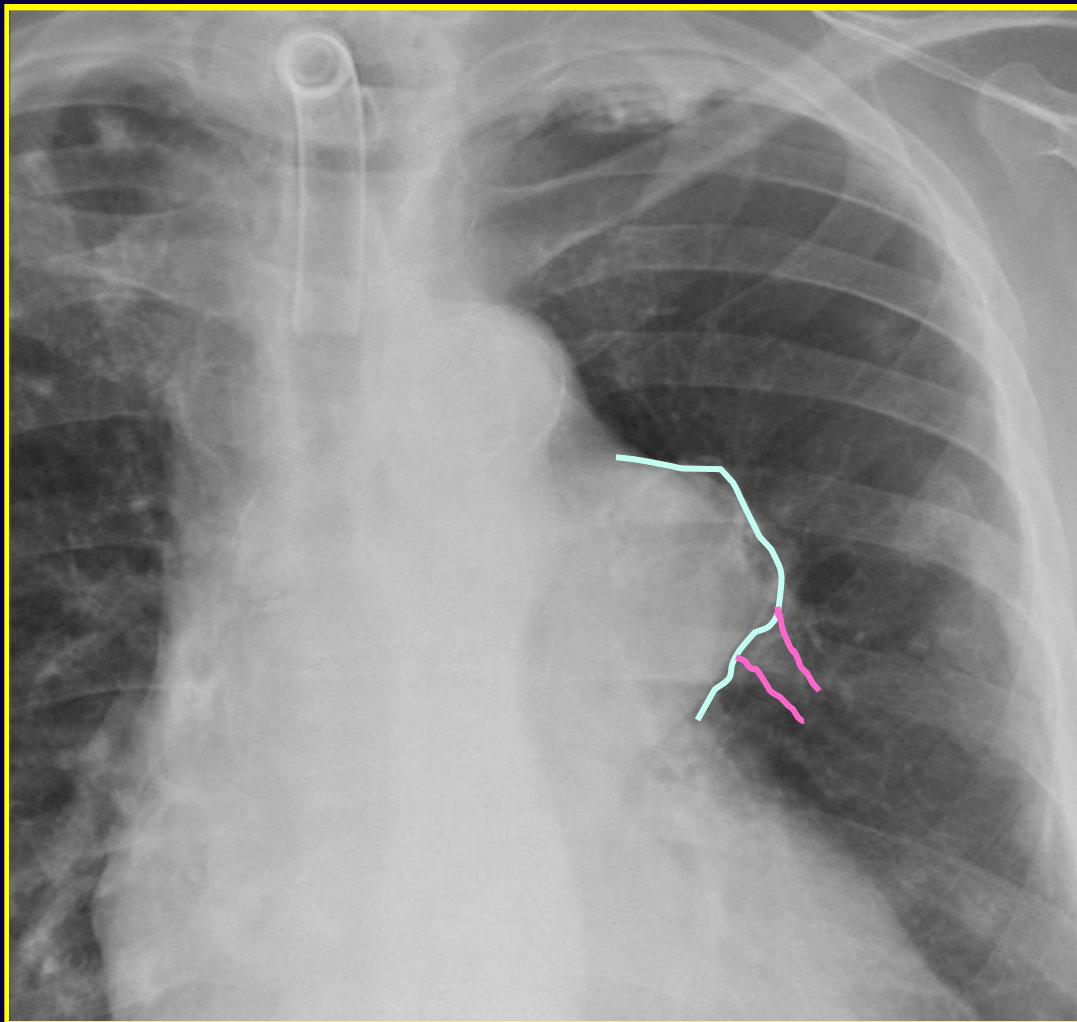
↳ *arteria polmonare dilatata*



✓ *i vasi sono visibili all'interno dell'opacità*

↳ *lesione non vascolare*

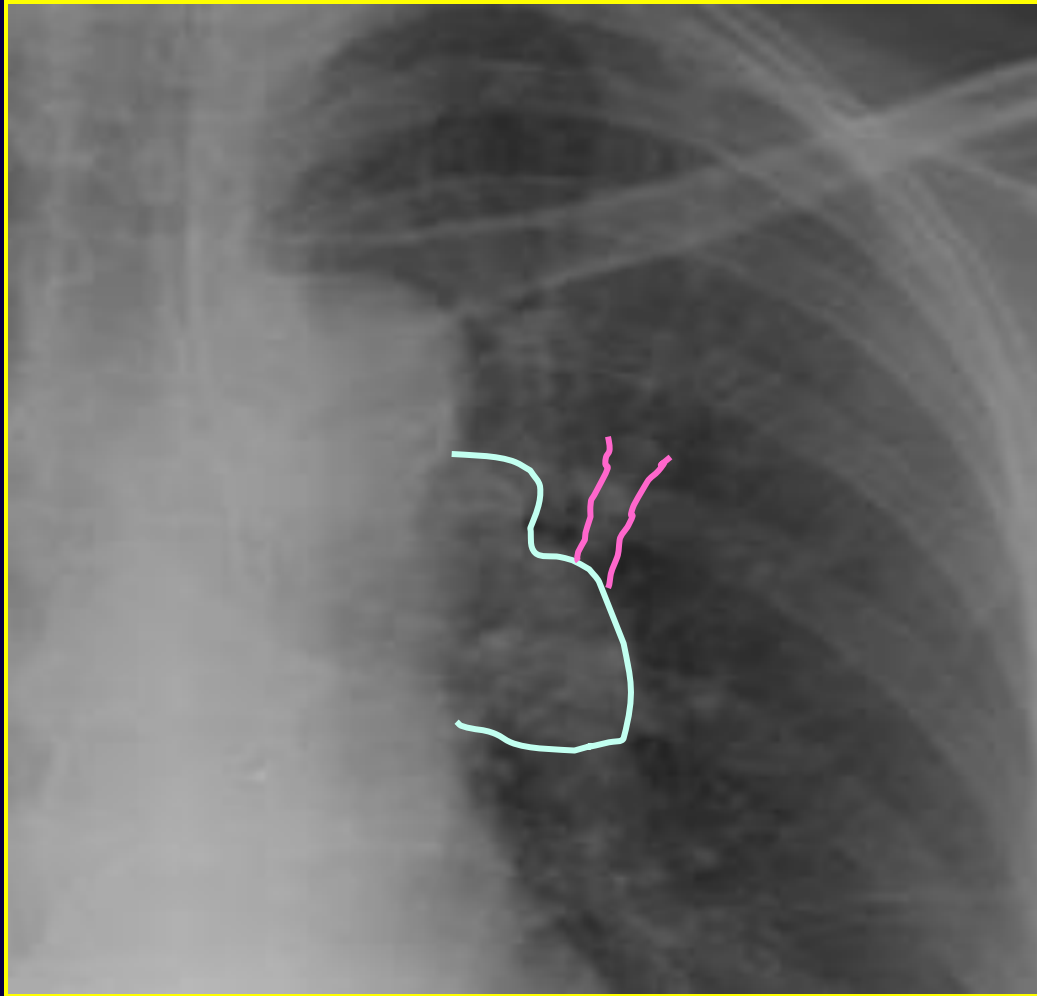




✓ *ingrandimento
ilare sn*



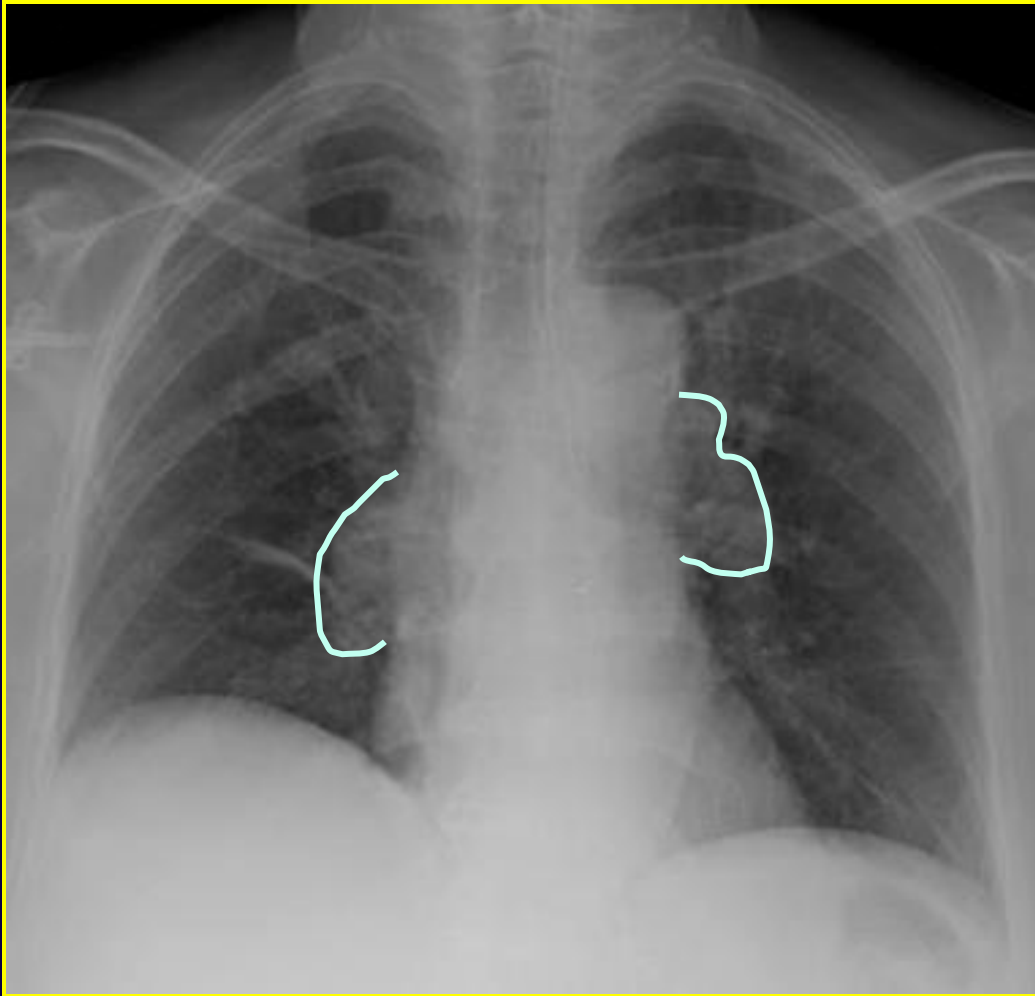
*Dilatazione
arteria
polmonare*



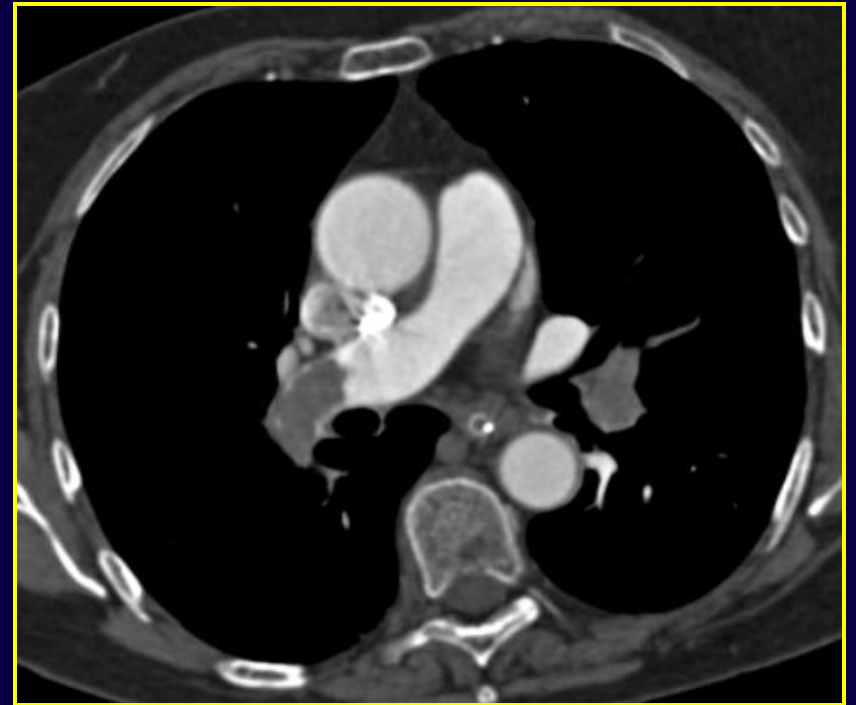
✓ *ingrandimento
ilare bilaterale*



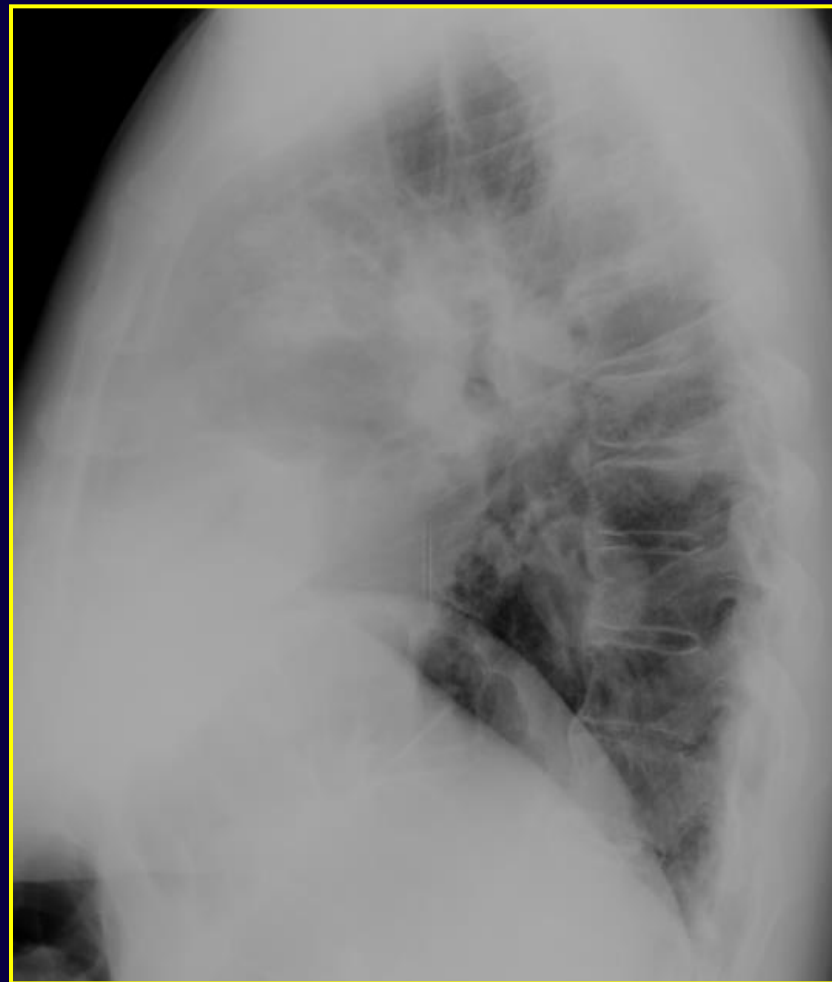
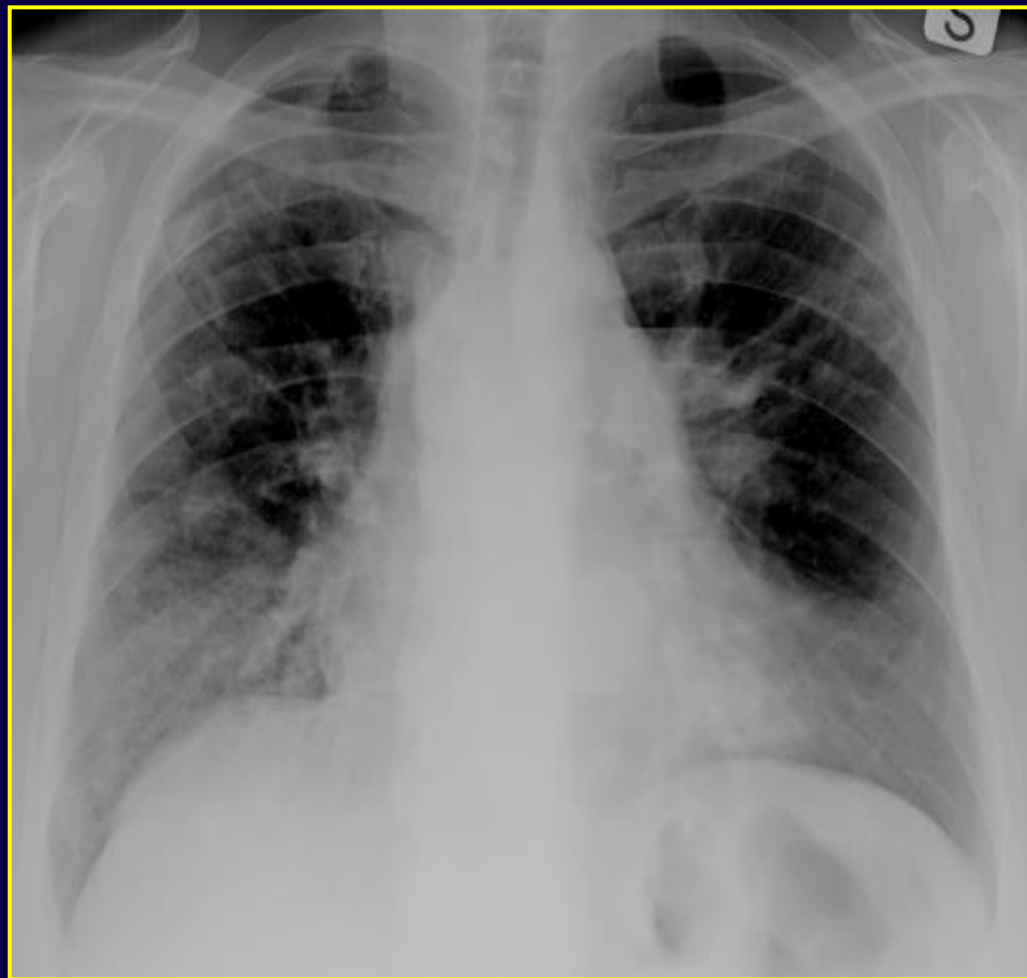
*Dilatazione
arterie
polmonari*

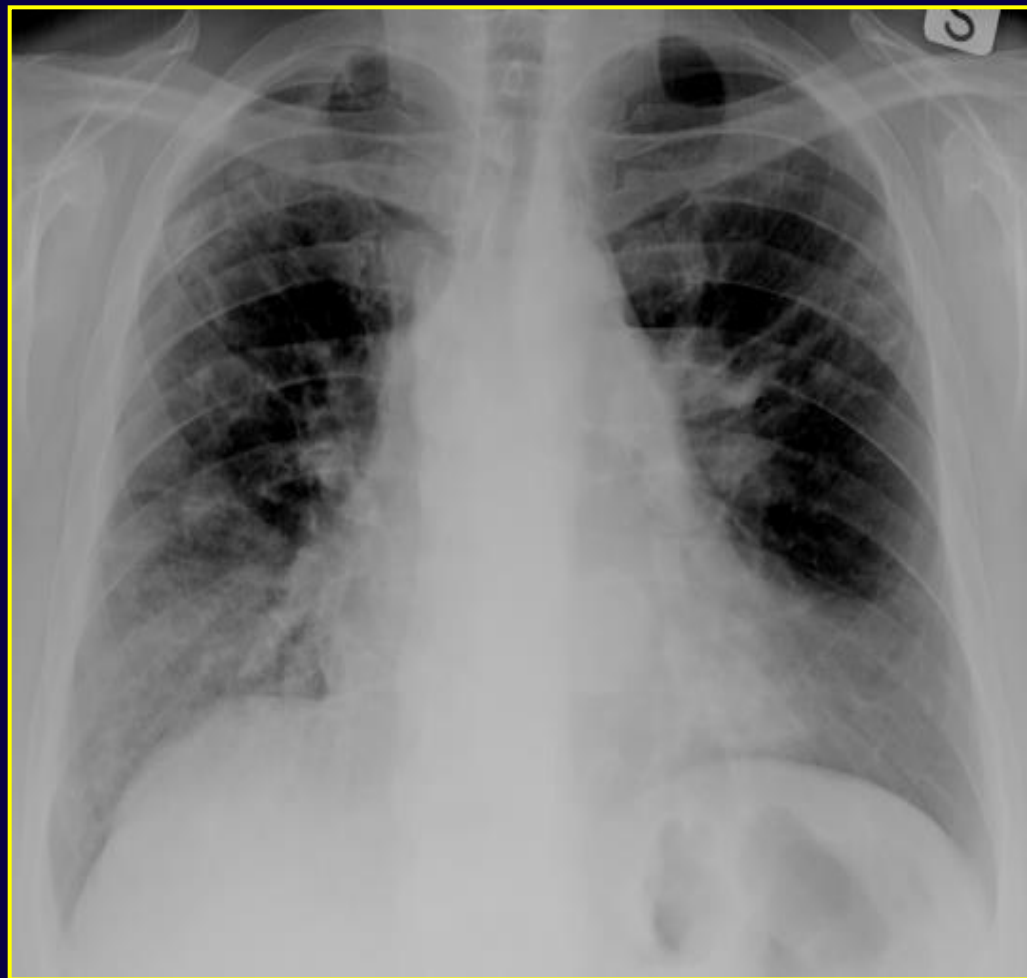


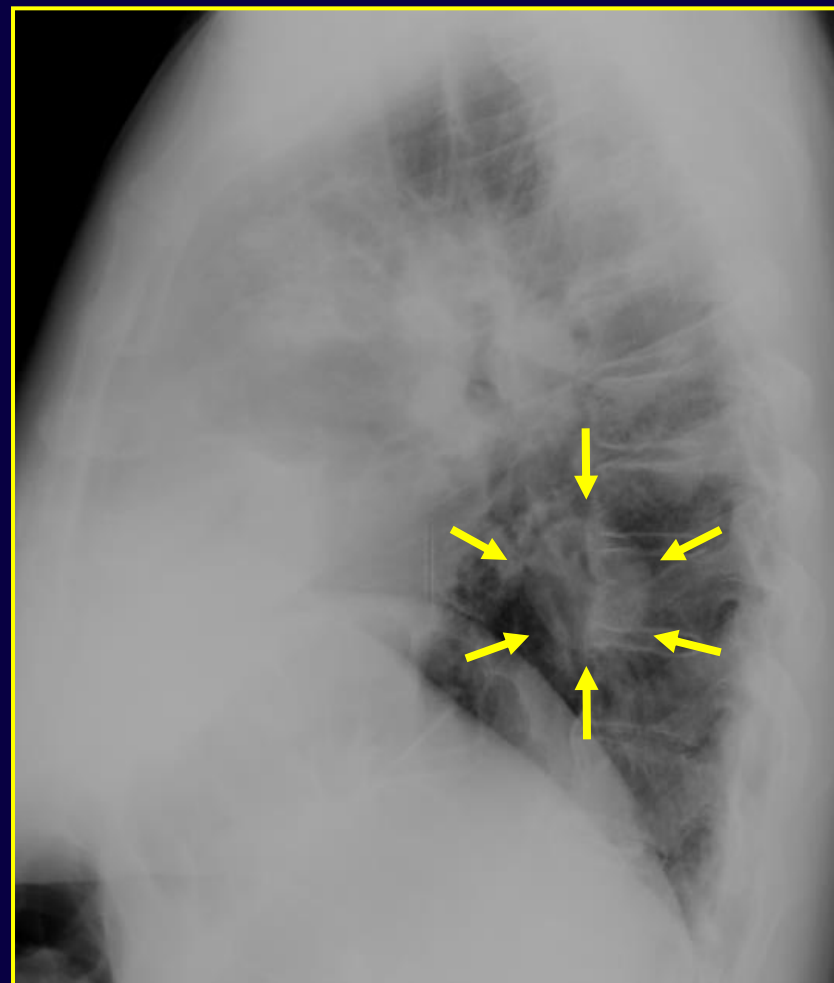
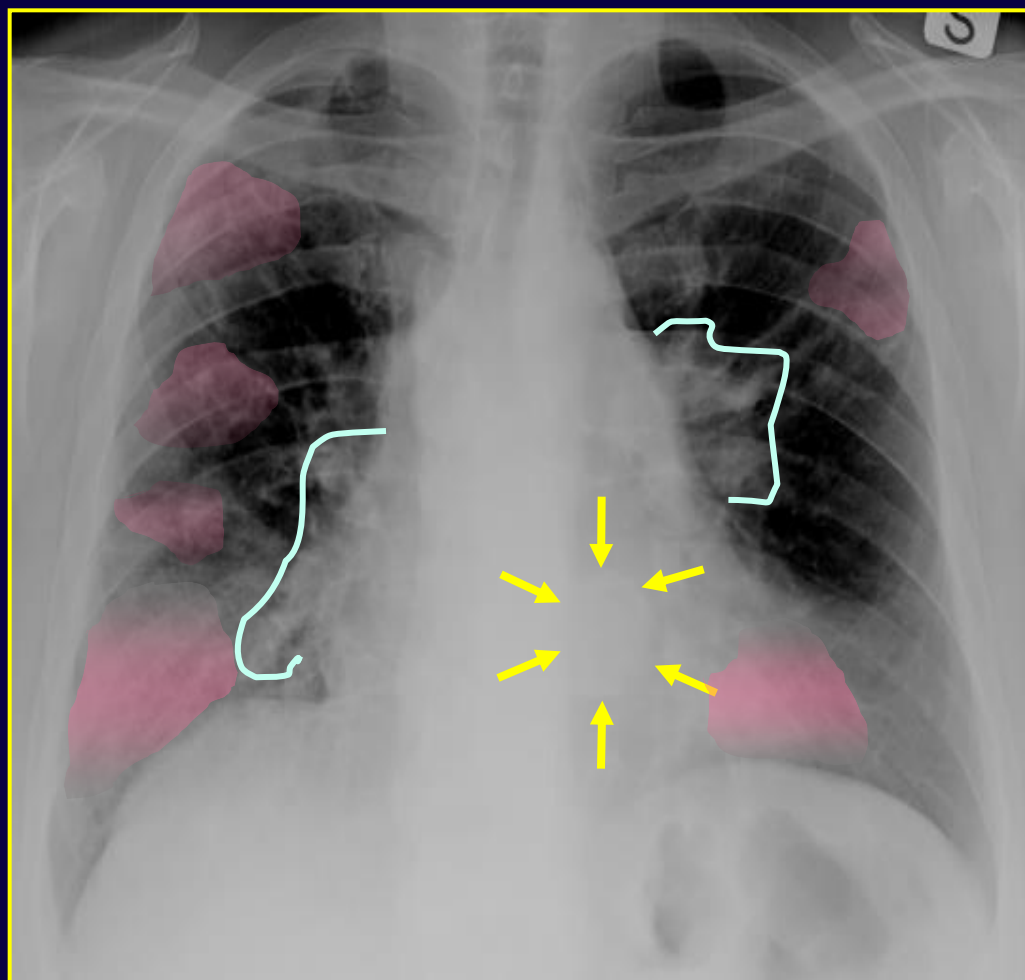
✓ *ingrandimento
ilare bilaterale*



Embolia polmonare acuta

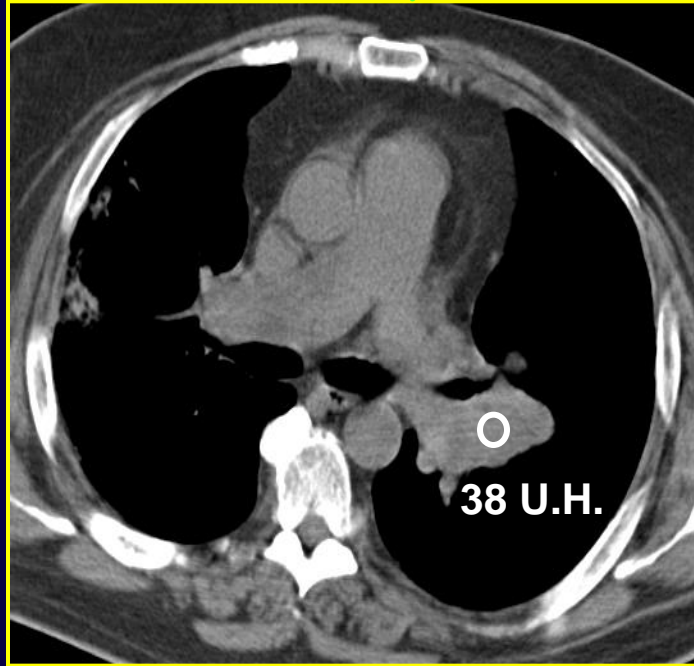




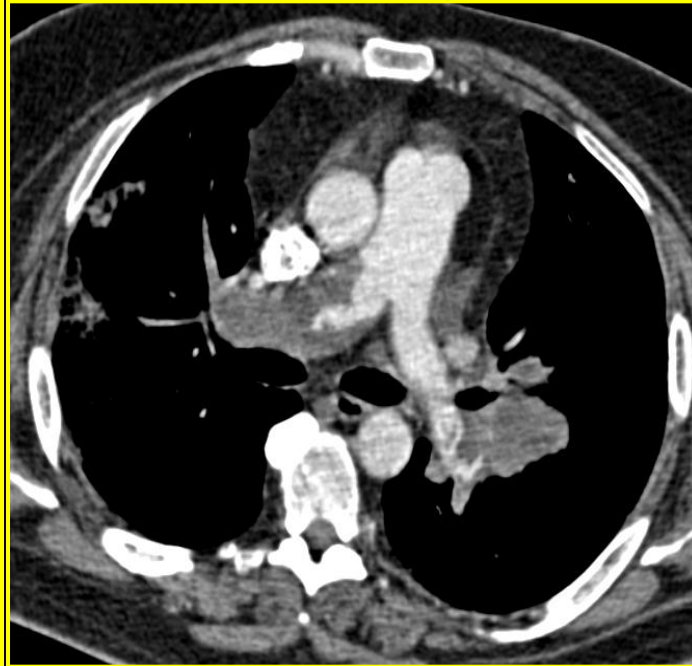


- ✓ *ingrandimento ilare bilaterale*
- ✓ *aree di ipodiafania a prevalente distribuzione periferica*
- ✓ *opacità nodulare nel lobo inferiore sn*

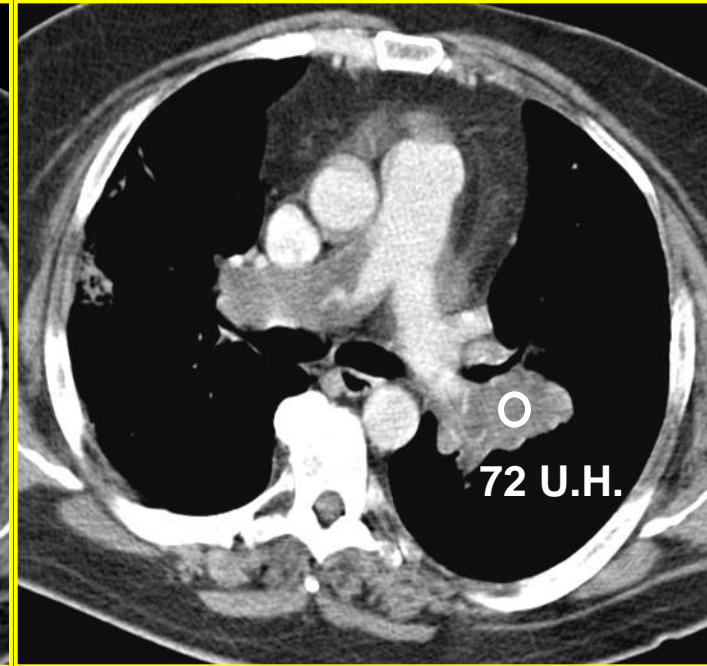
senza mdc



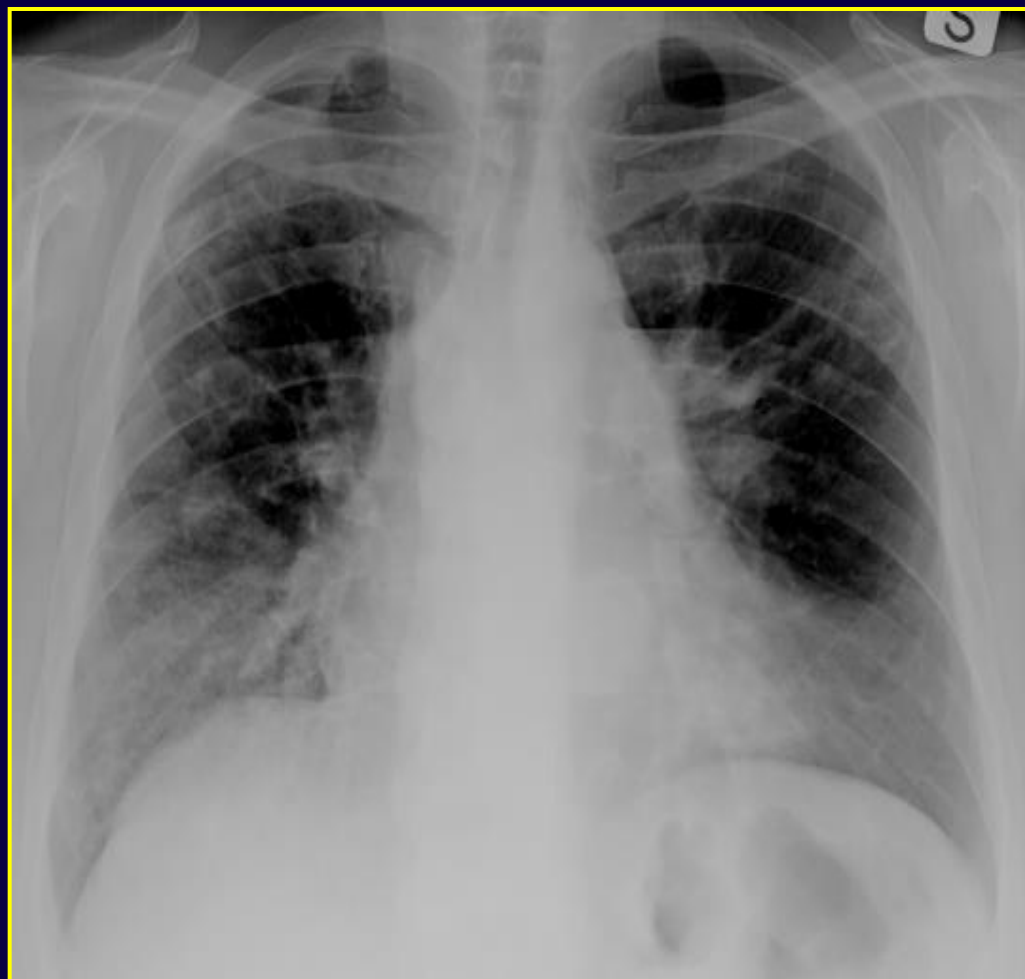
15 sec.



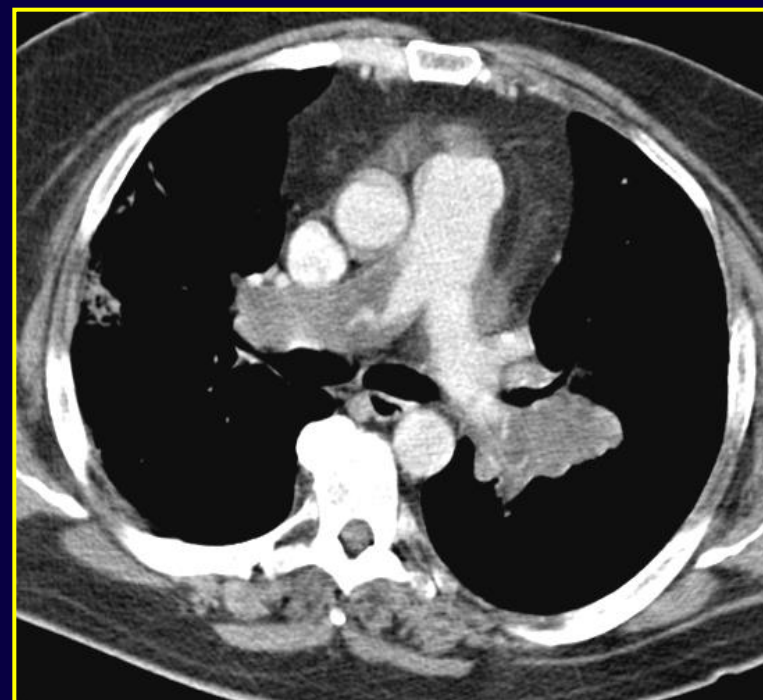
tardiva



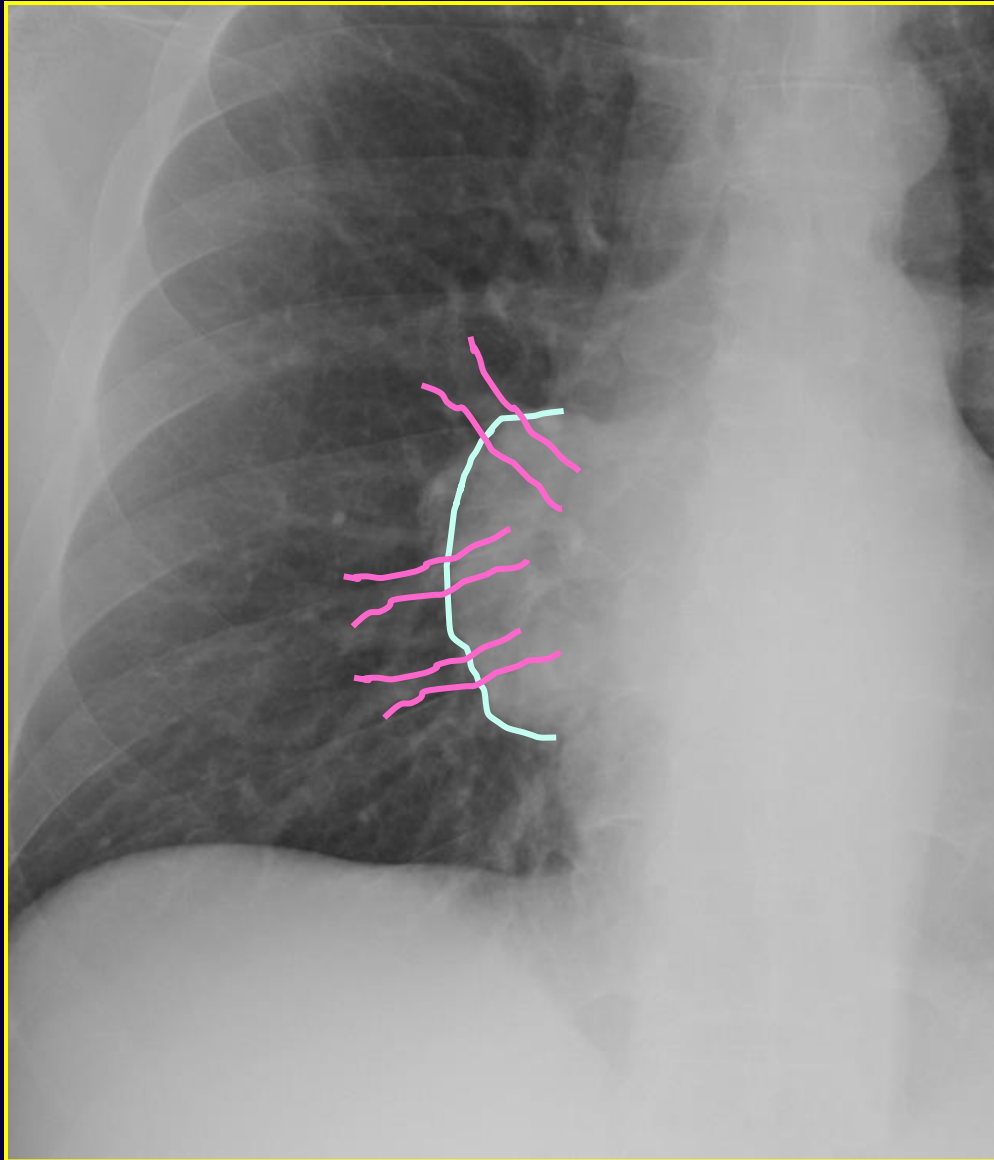
- ✓ difetto di opacizzazione che occupa l'intera sezione del vaso
- ✓ interessamento delle arterie polmonari prossimali aumentate di calibro
- ✓ estensione extraluminale
- ✓ modesto enhancement dopo mdc



✓ *ingrandimento
ilare bilaterale*



Sarcoma arterie polmonari



✓ *ingrandimento
ilare dx*

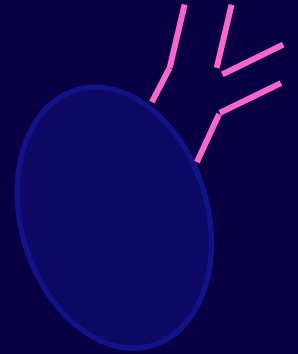


*Segno della
convergenza
all'ilo*

Segno della convergenza all'ilo

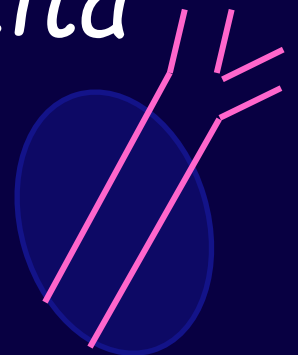
✓ *i vasi convergono e si interrompono sul profilo esterno dell'opacità*

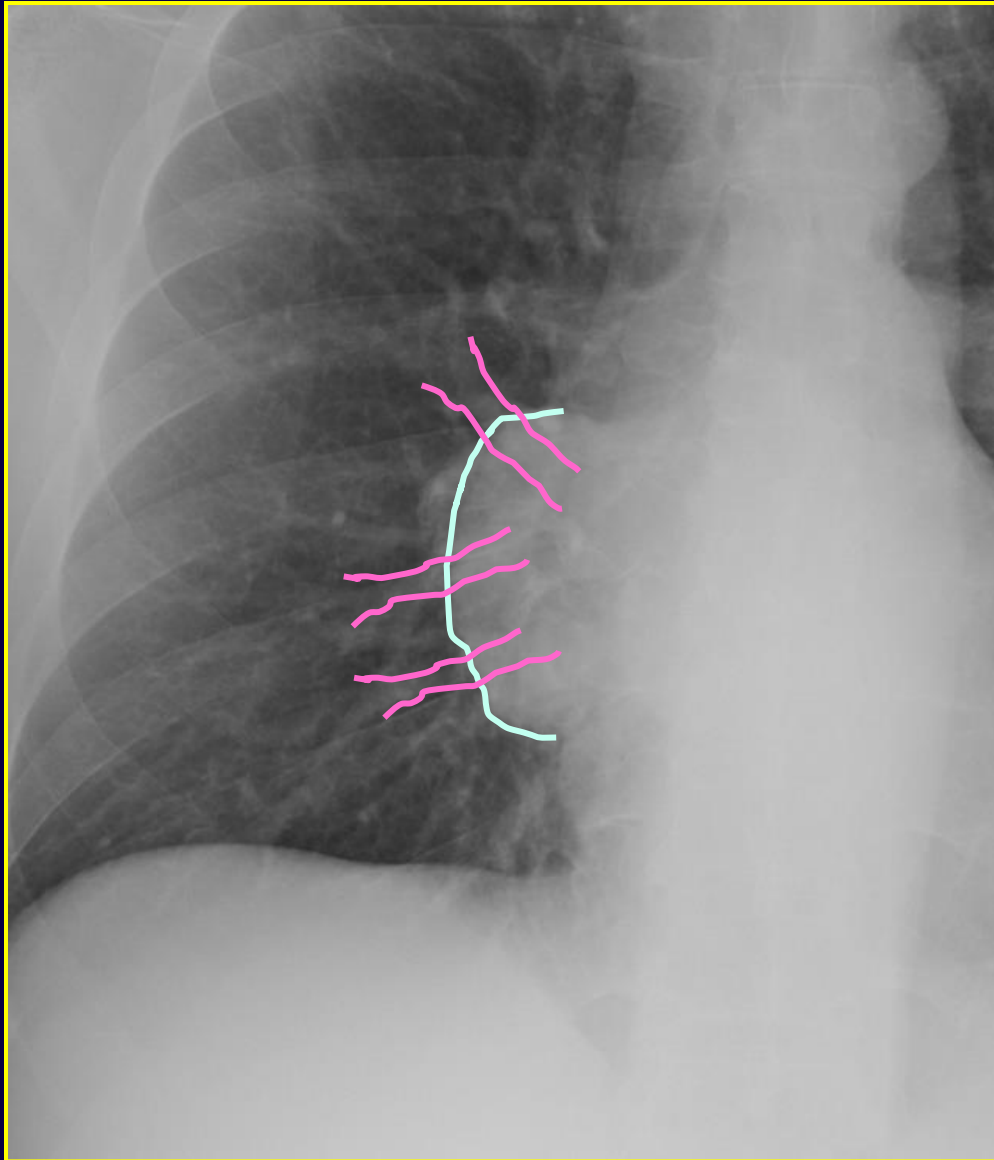
↳ *arteria polmonare dilatata*



✓ *i vasi sono visibili all'interno dell'opacità*

↳ *lesione non vascolare*

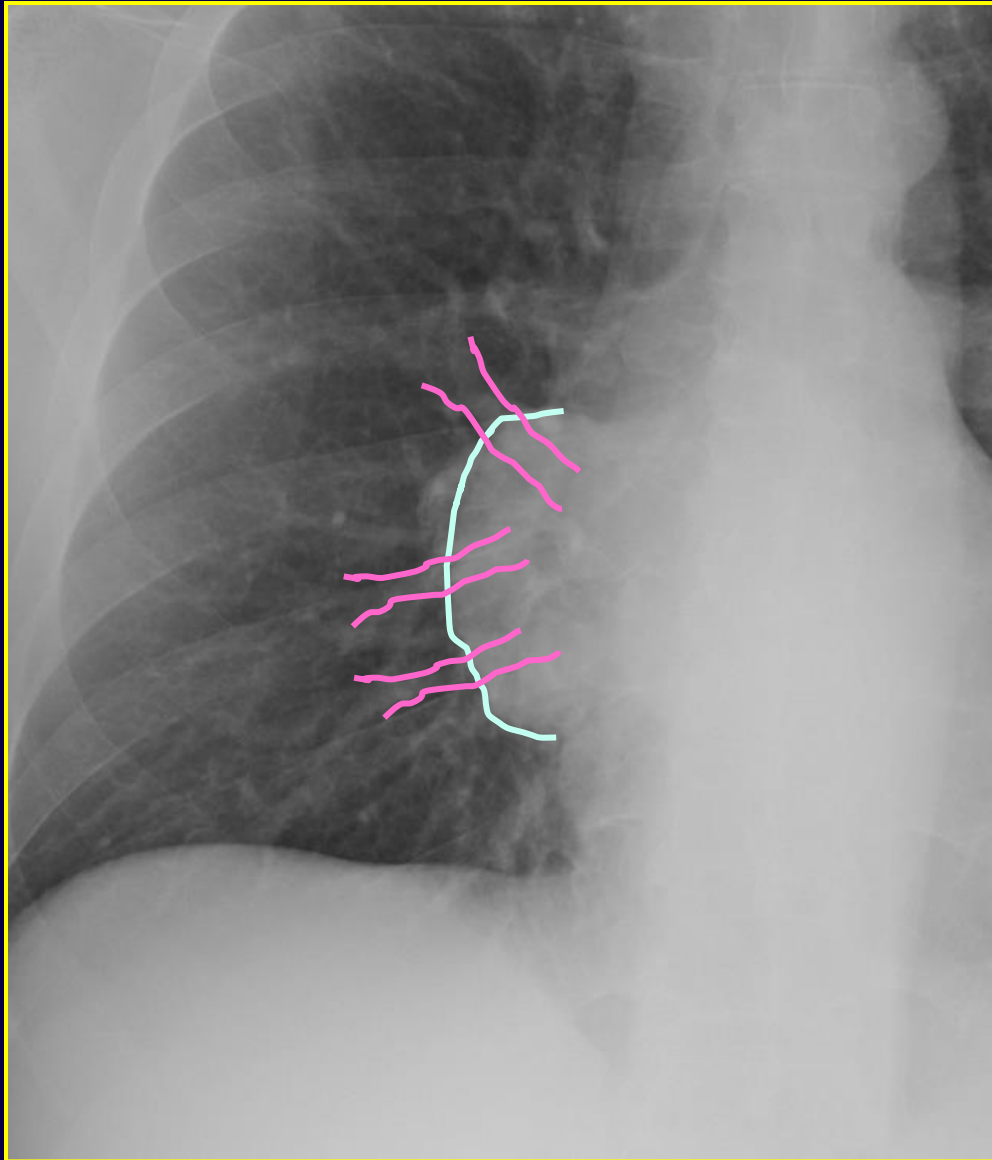




✓ *ingrandimento
ilare dx*



*Lesione
non vascolare*



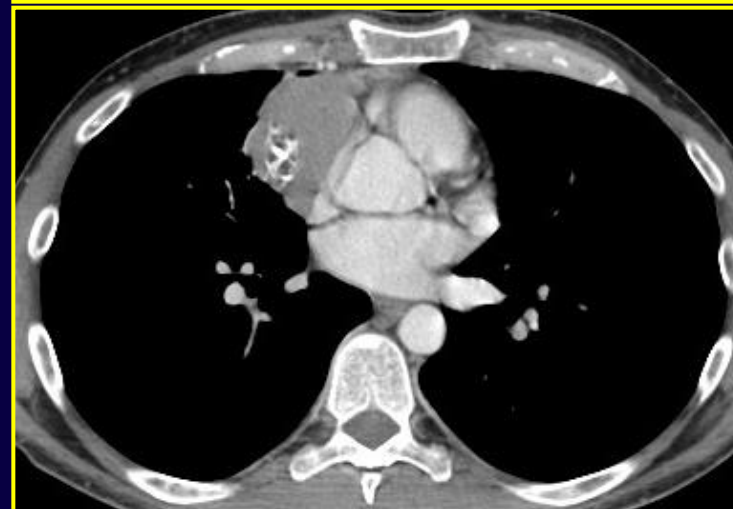
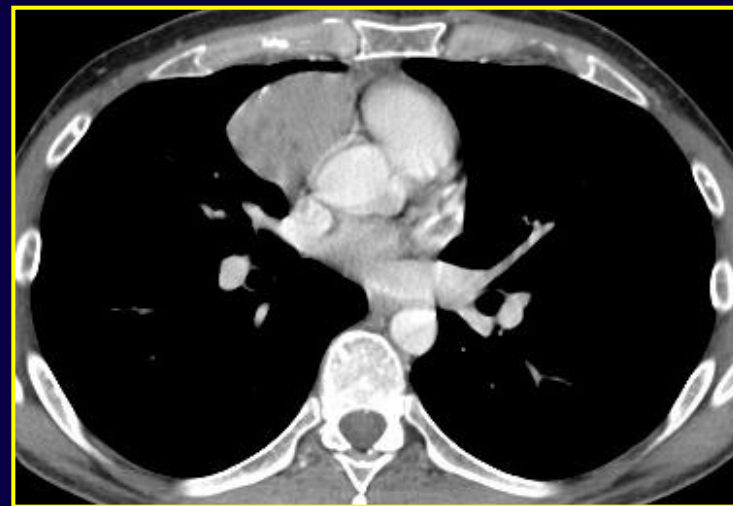
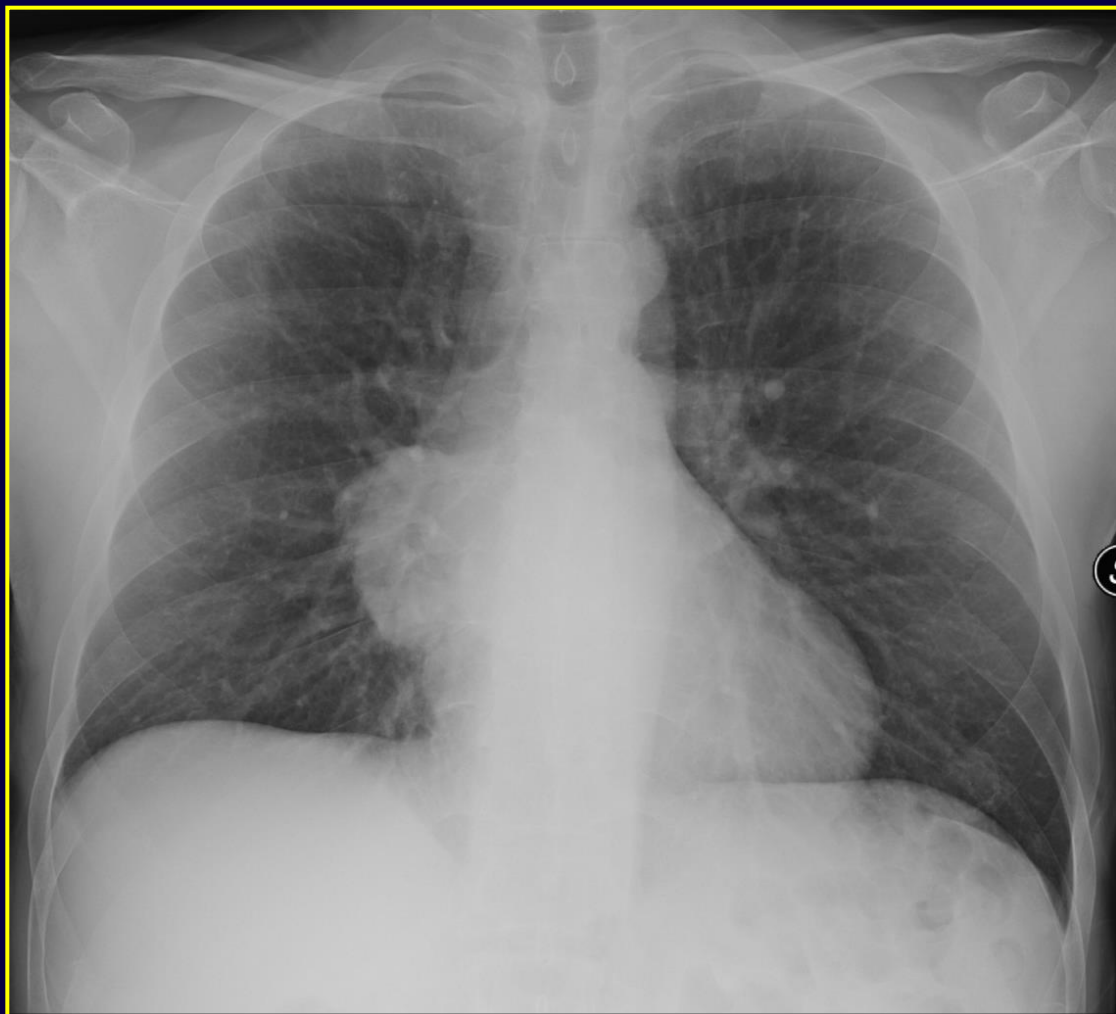
✓ ingrandimento
ilare dx

Segni associati

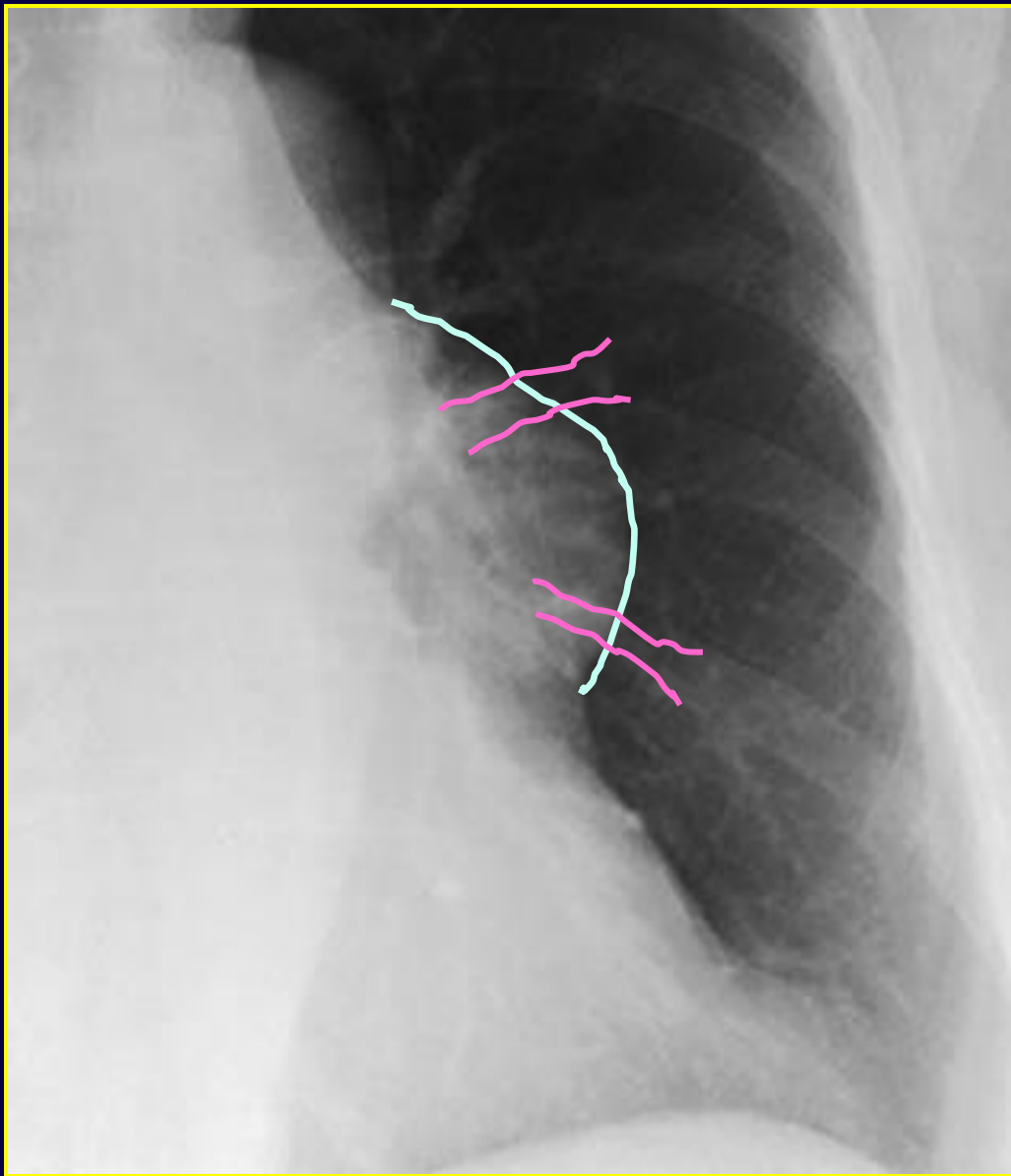
- ✓ margini netti verso
il parenchima
- ✓ cancellazione di parte
del profilo cardiaco dx



Massa mediastinica



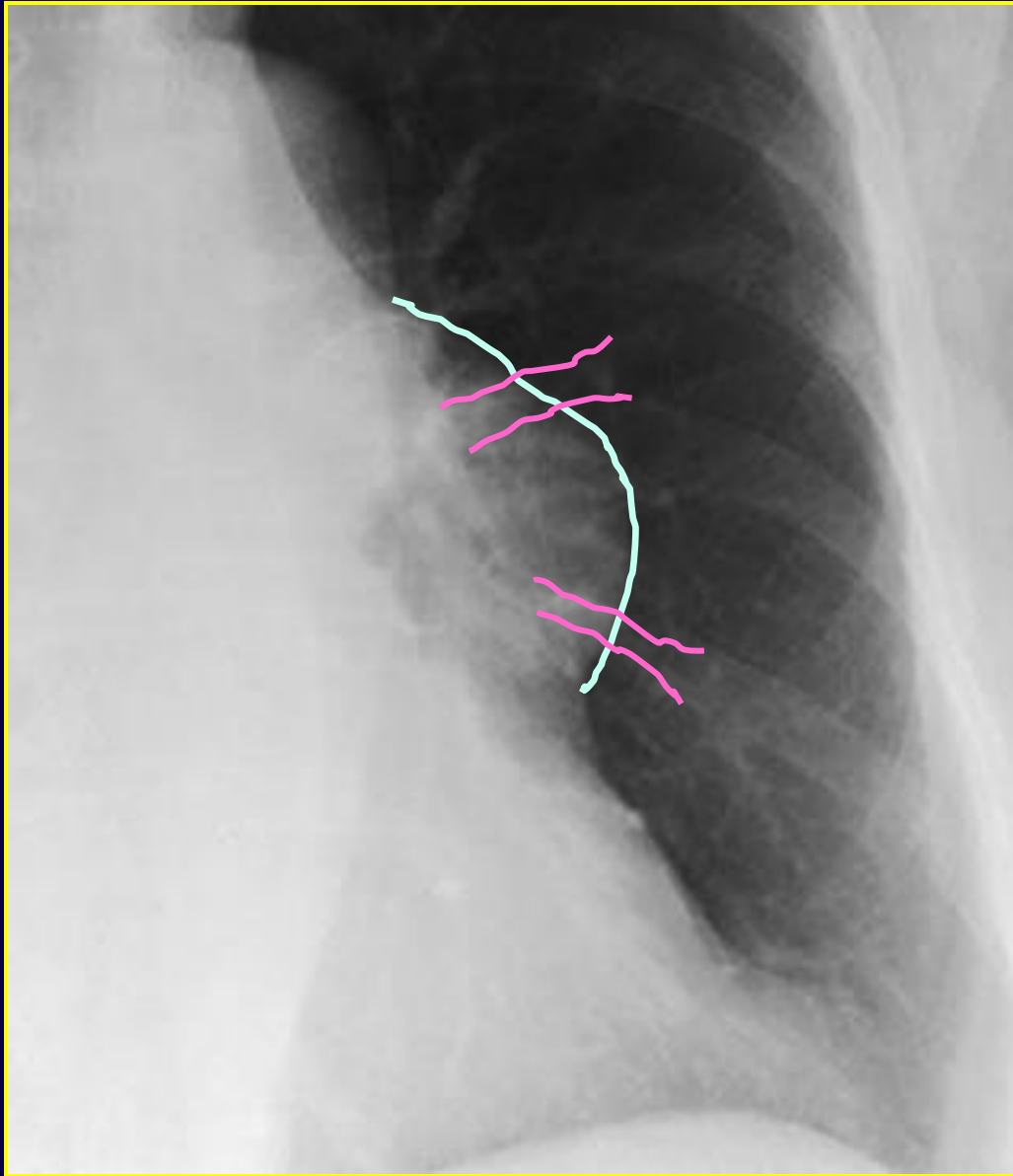
Teratoma mediastinico



✓ *ingrandimento
ilare sn*



*Segno della
convergenza
all'ilo*



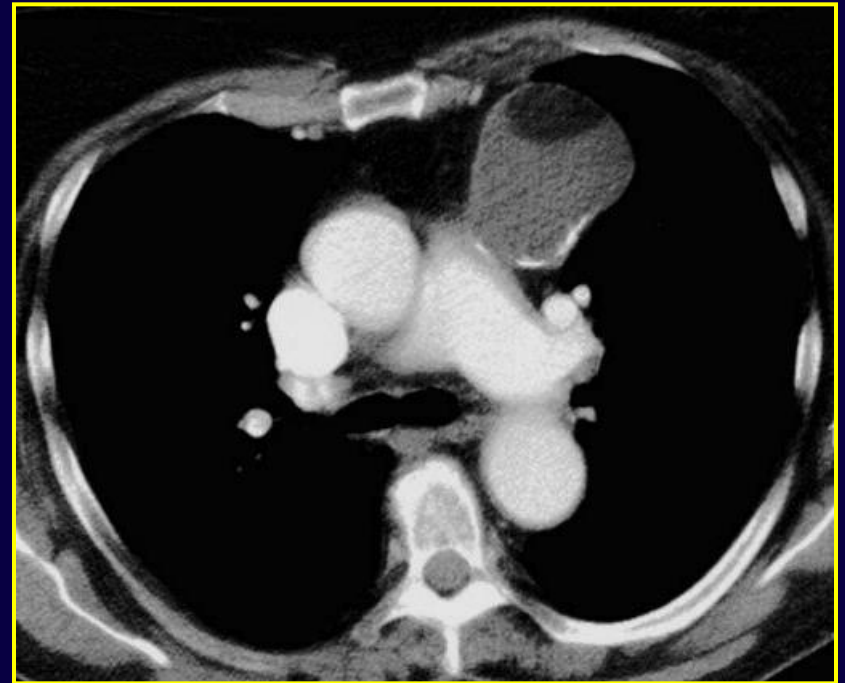
✓ *ingrandimento
ilare sn*



*Lesione
non vascolare*



✓ *ingrandimento
ilare sn*



Cisti dermoide



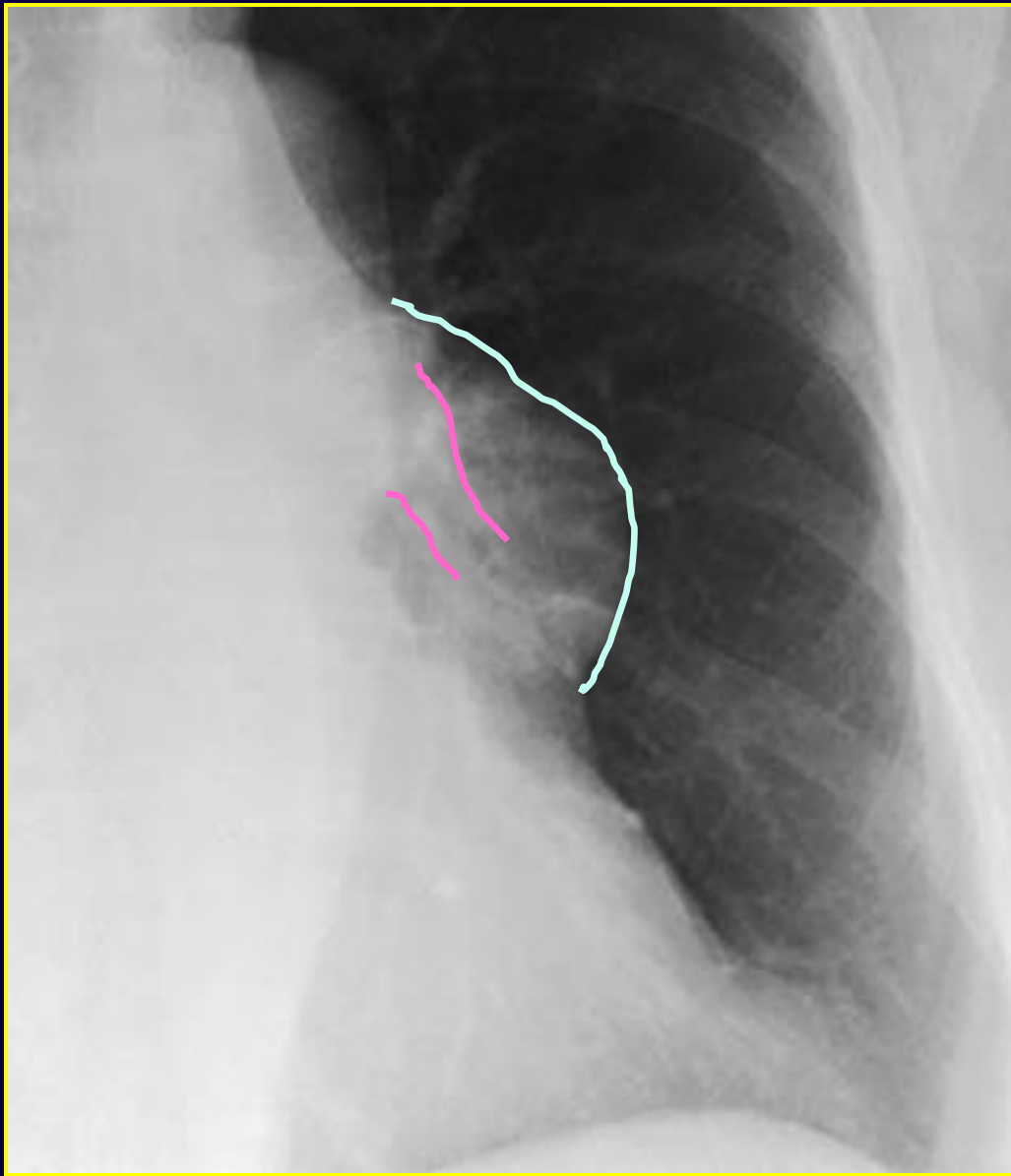
✓ *ingrandimento
ilare sn*



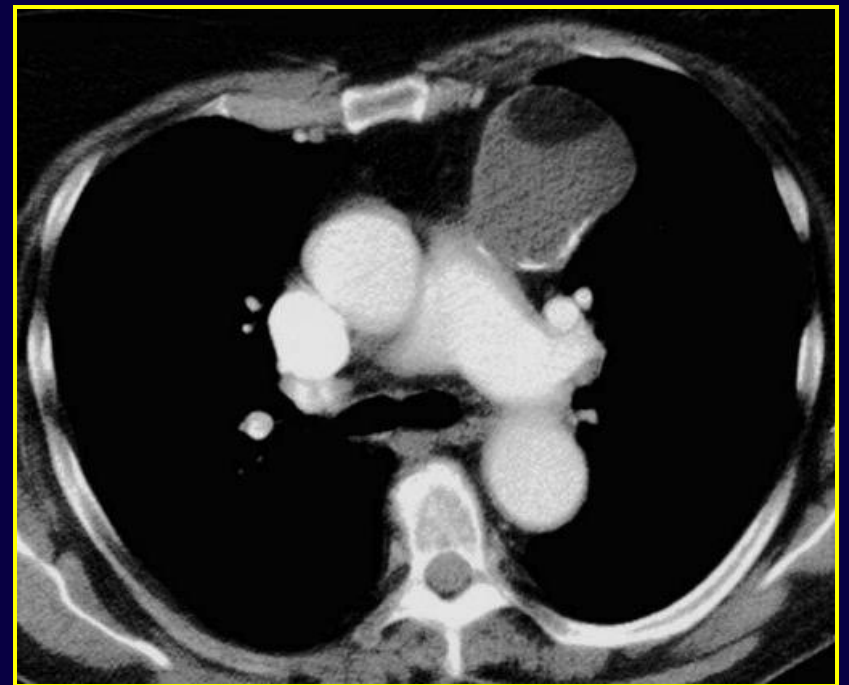
*Segno dell'ilo
sovrapposto*

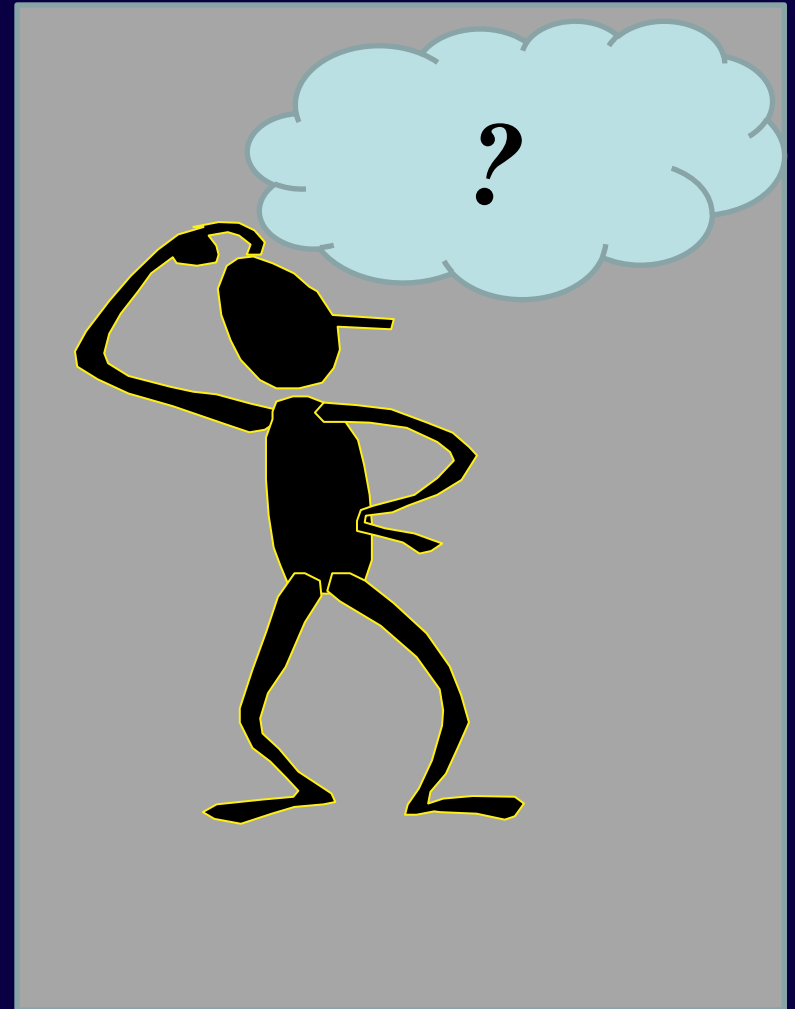
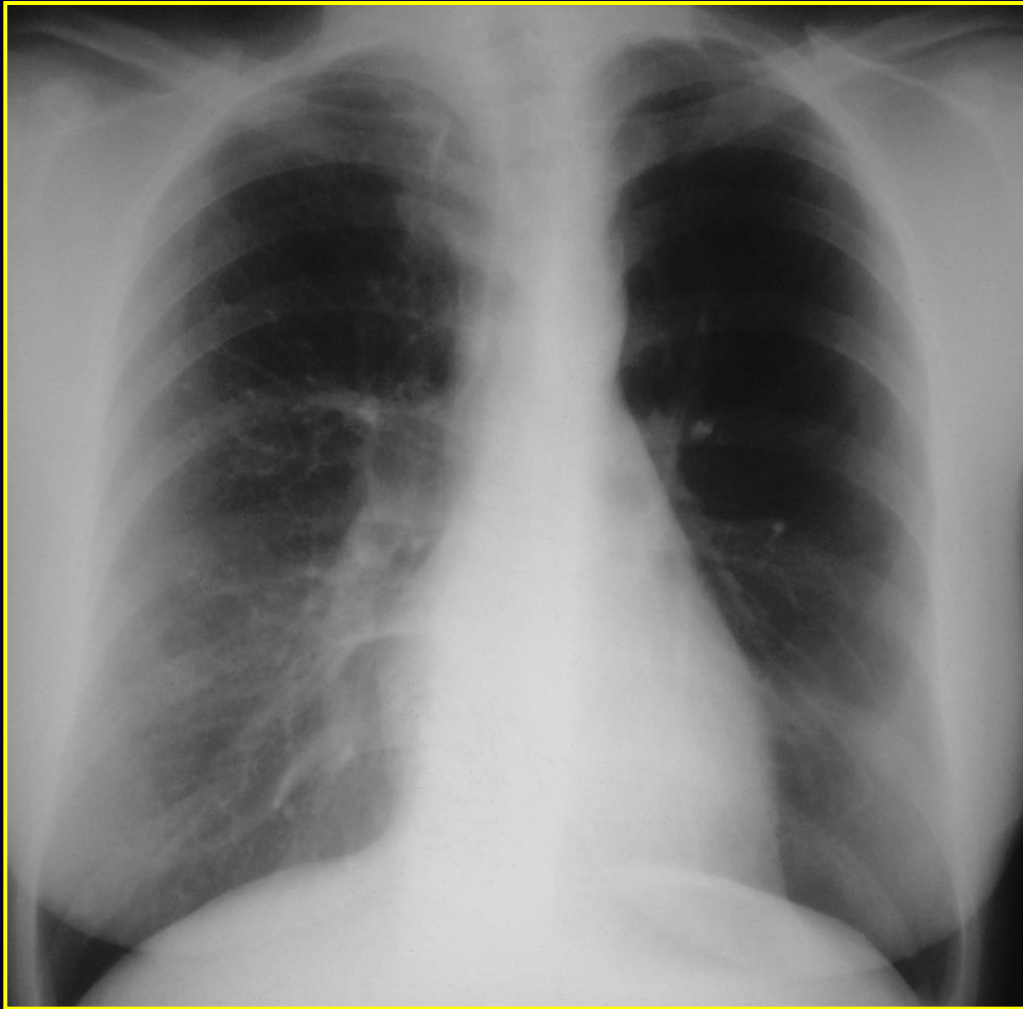
Segno dell'ilo sovrapposto

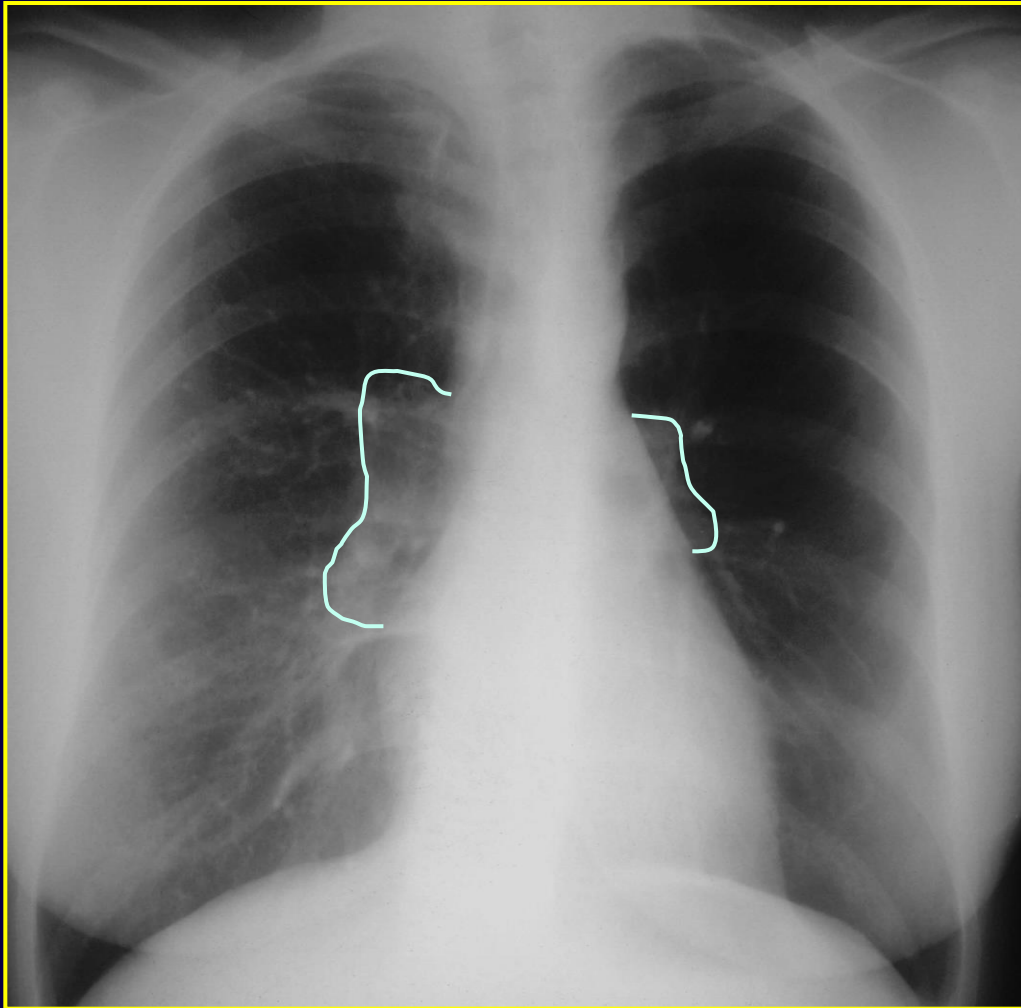
- ✓ *il tratto prossimale del ramo sn o dx dell'arteria polmonare normalmente è situato lateralmente o appena all'interno del margine cardiaco*
- ✓ *in presenza di una **massa mediastinica anteriore** la prima diramazione vascolare polmonare si osserva all'interno dell'opacità*



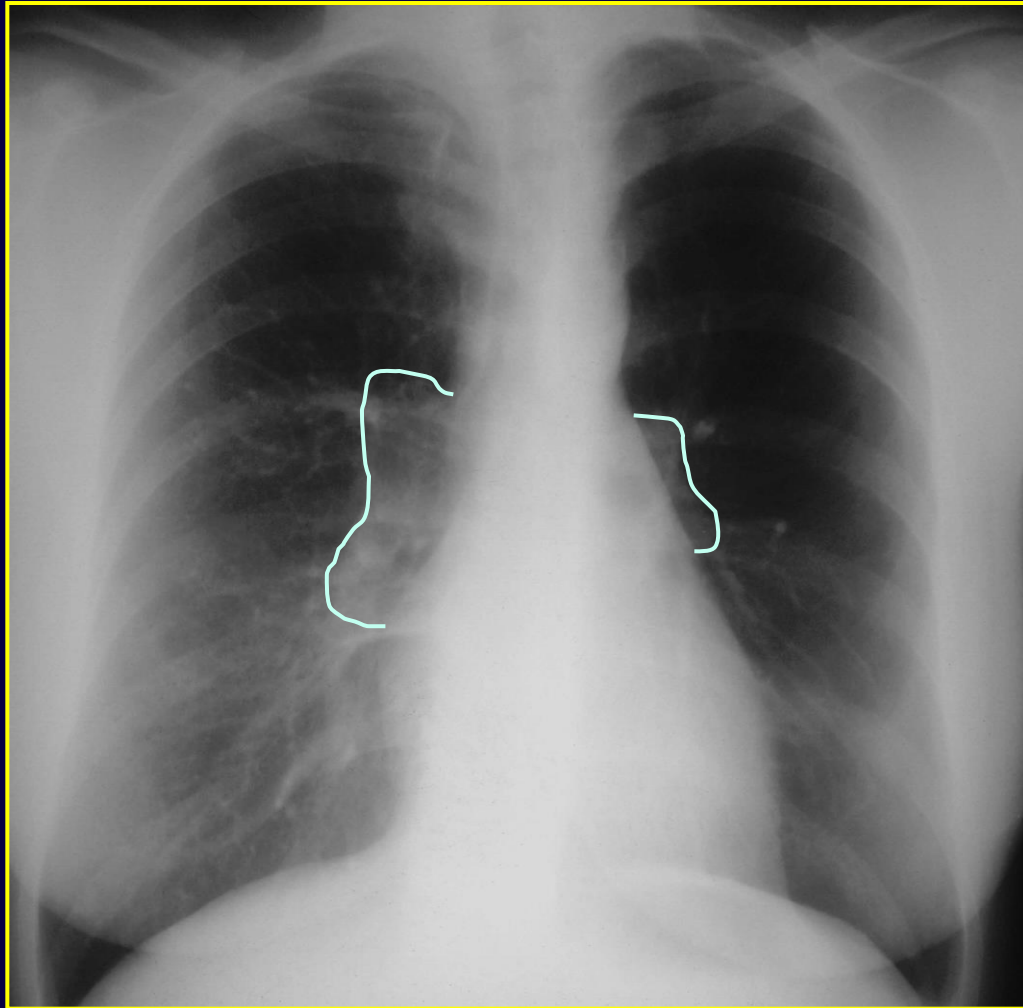
✓ *ingrandimento
ilare sn*



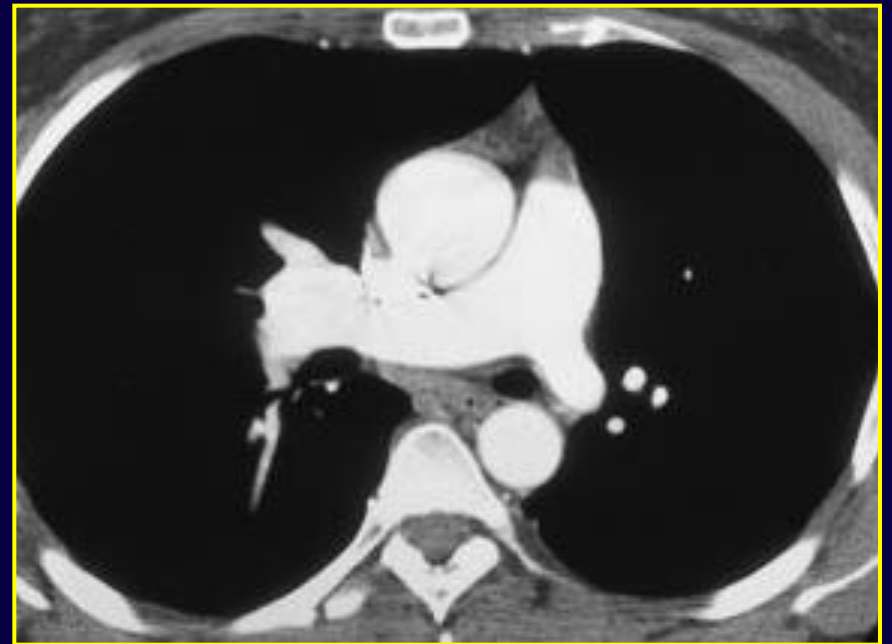




- ✓ *asimmetria degli ili con riduzione di dimensioni dell'ilo sn*
- ✓ *polmone sn iperdiafano*
- ✓ *lieve riduzione di volume dell'emittoace sn*



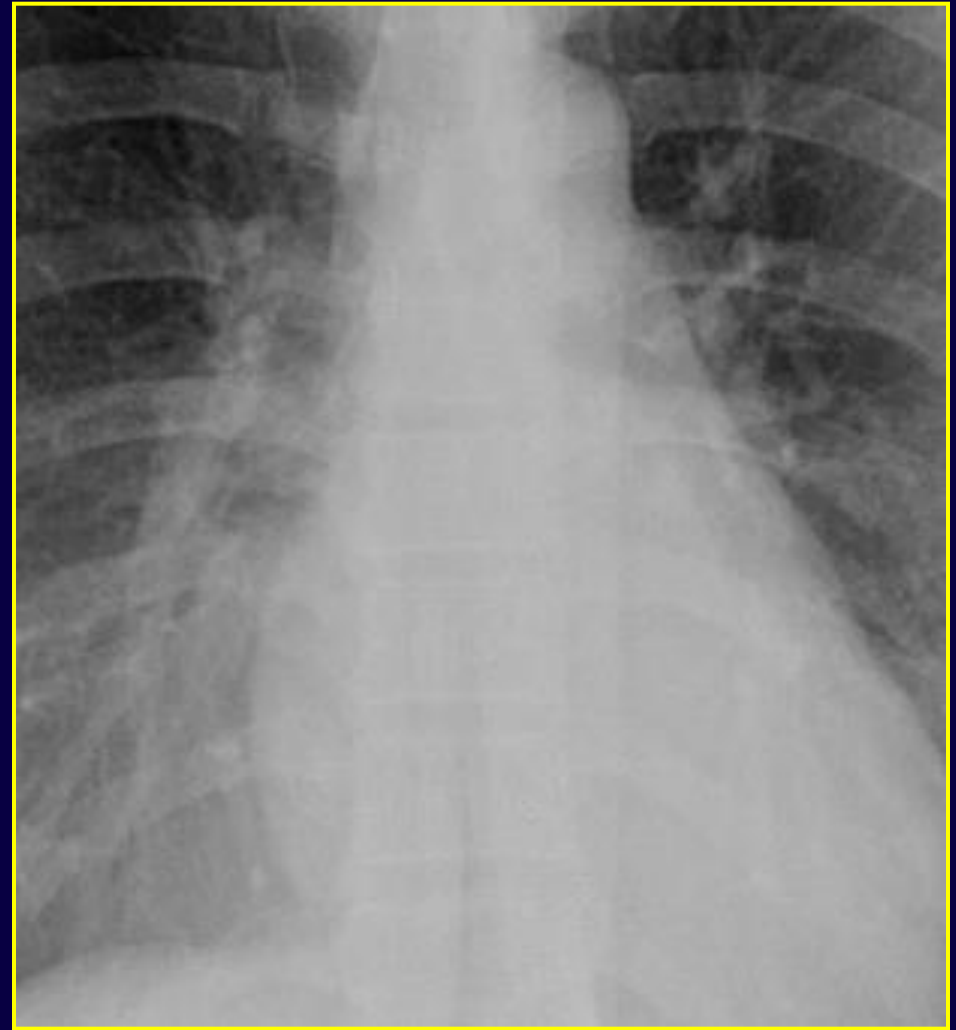
✓ *asimmetria degli ili con riduzione di dimensioni dell'ilo sn*

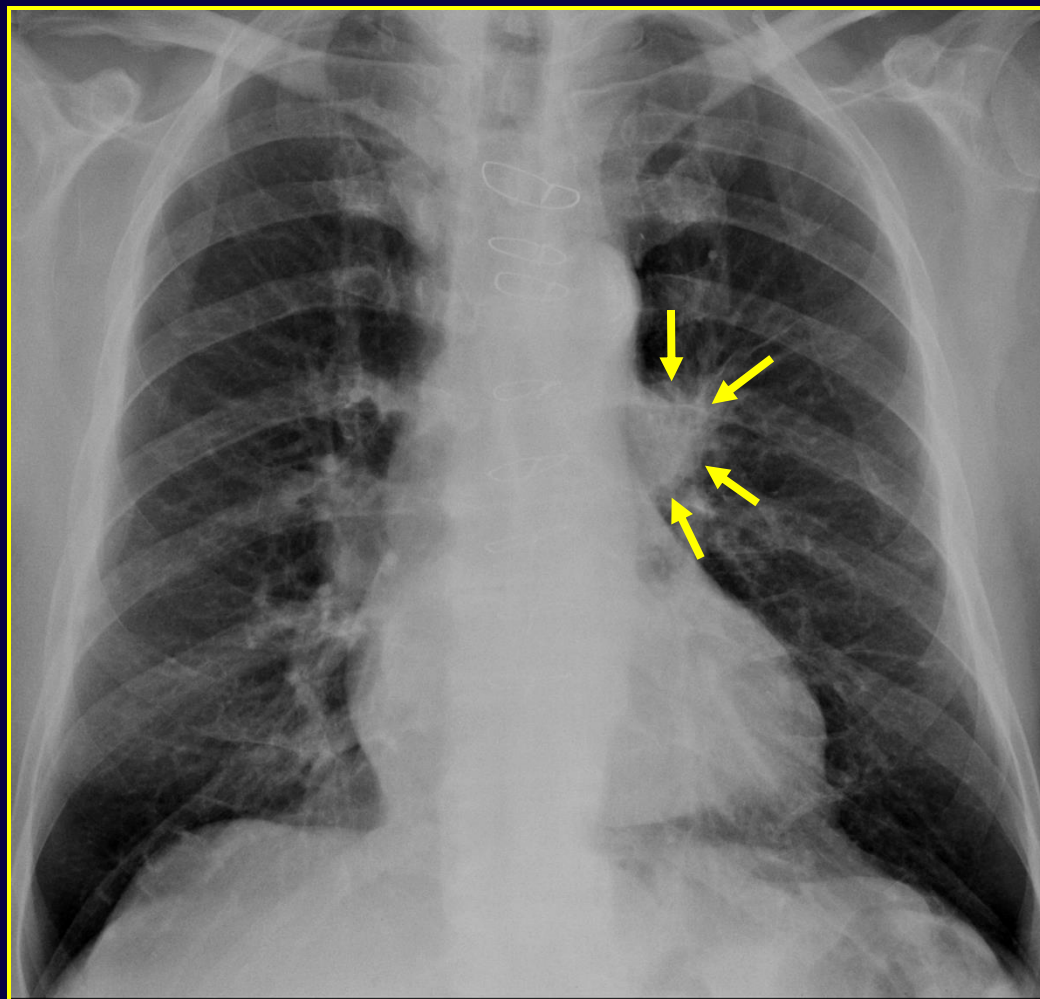


Sindrome di Swyer-James, MacLeod

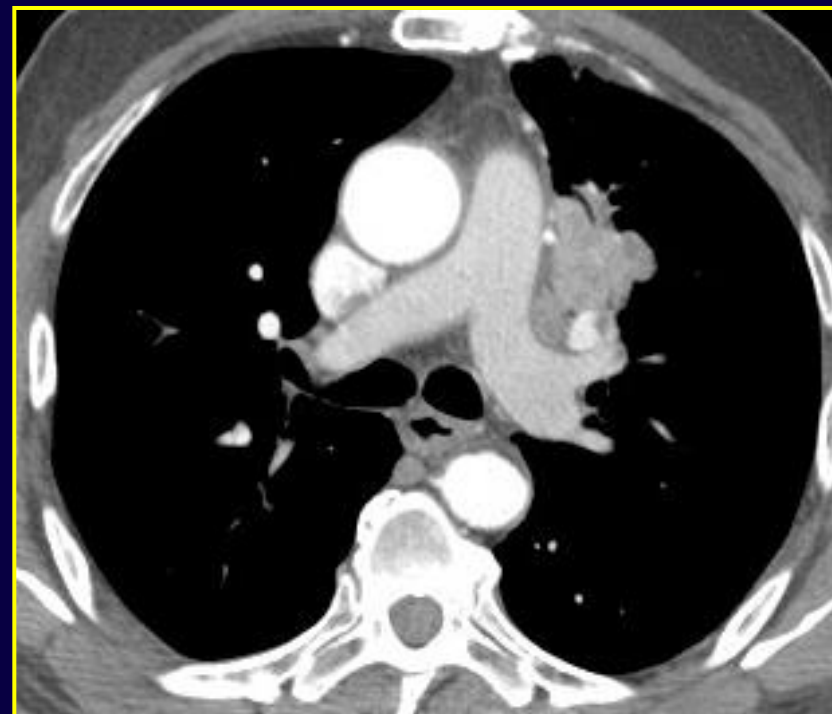
Valutazione ili

- ✓ *Dimensioni*
- ✓ *Radiopacità*
- ✓ *Forma*
- ✓ *Sede*

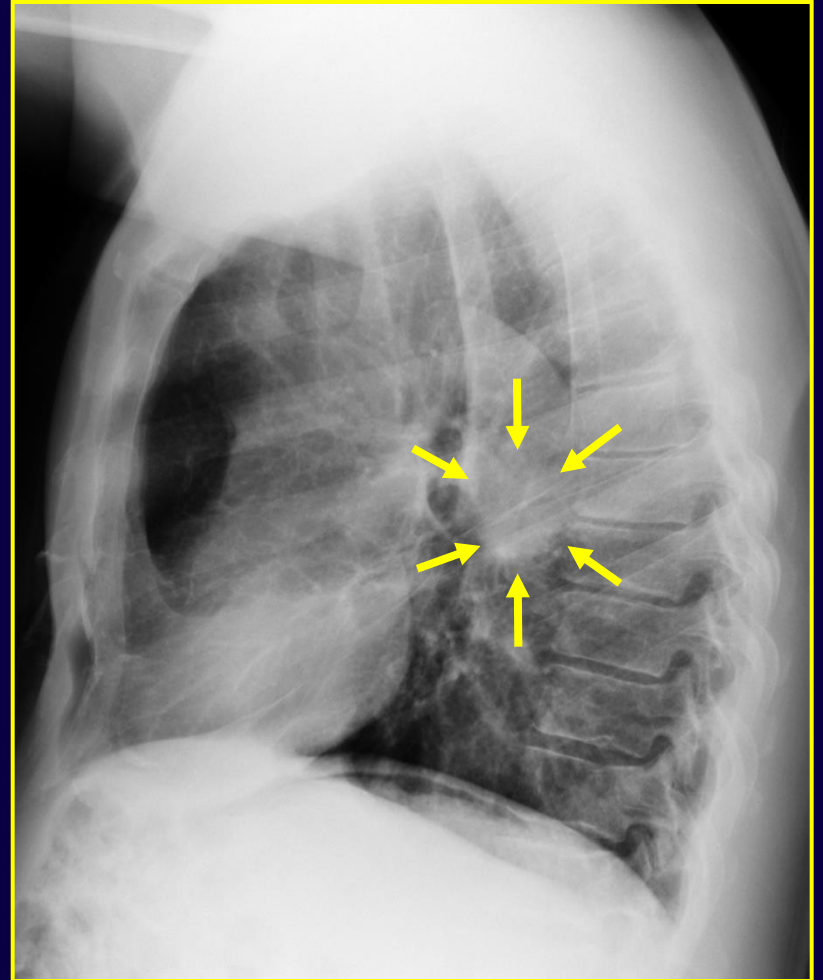
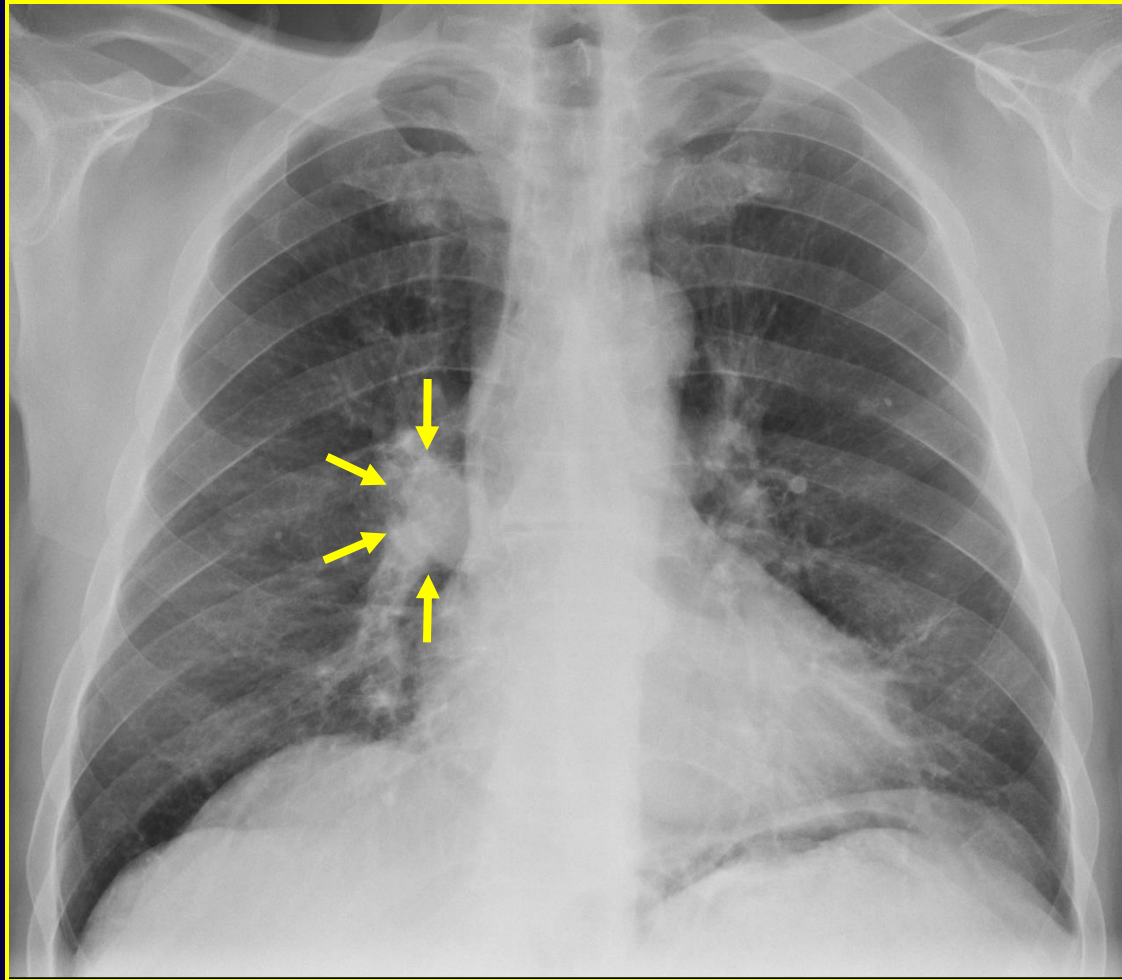


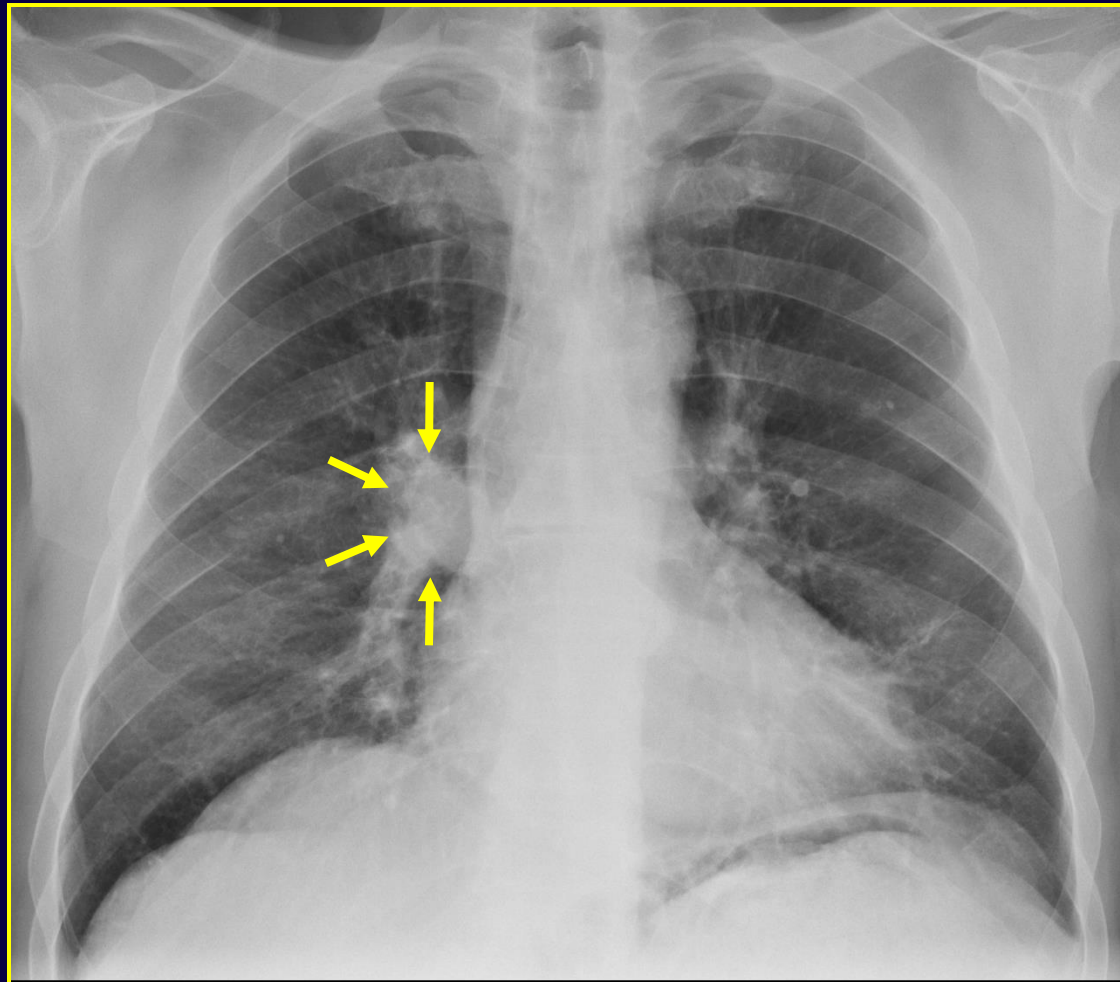


✓ aumento radiopacità
ilare sn

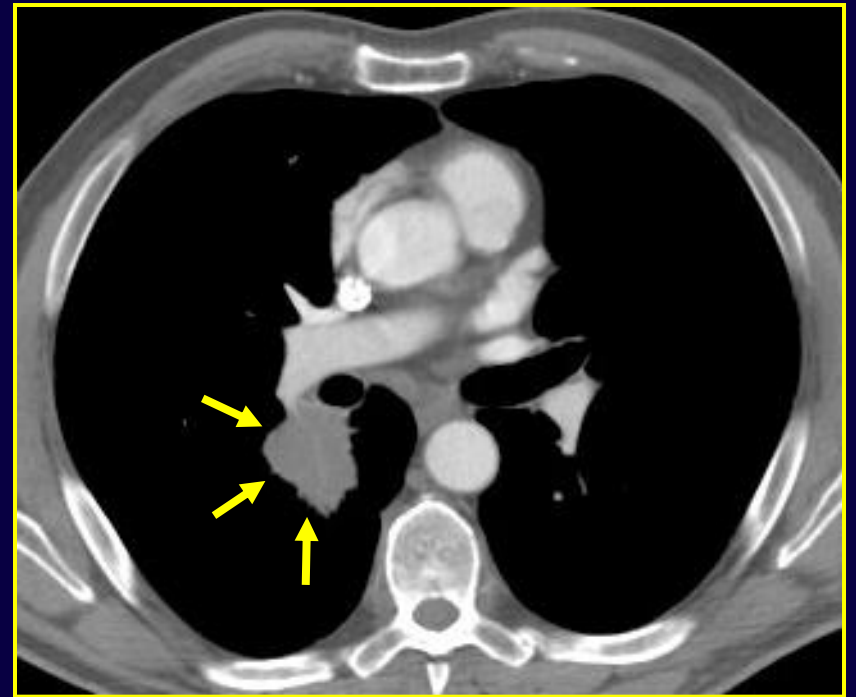


Tumore centrale LSS

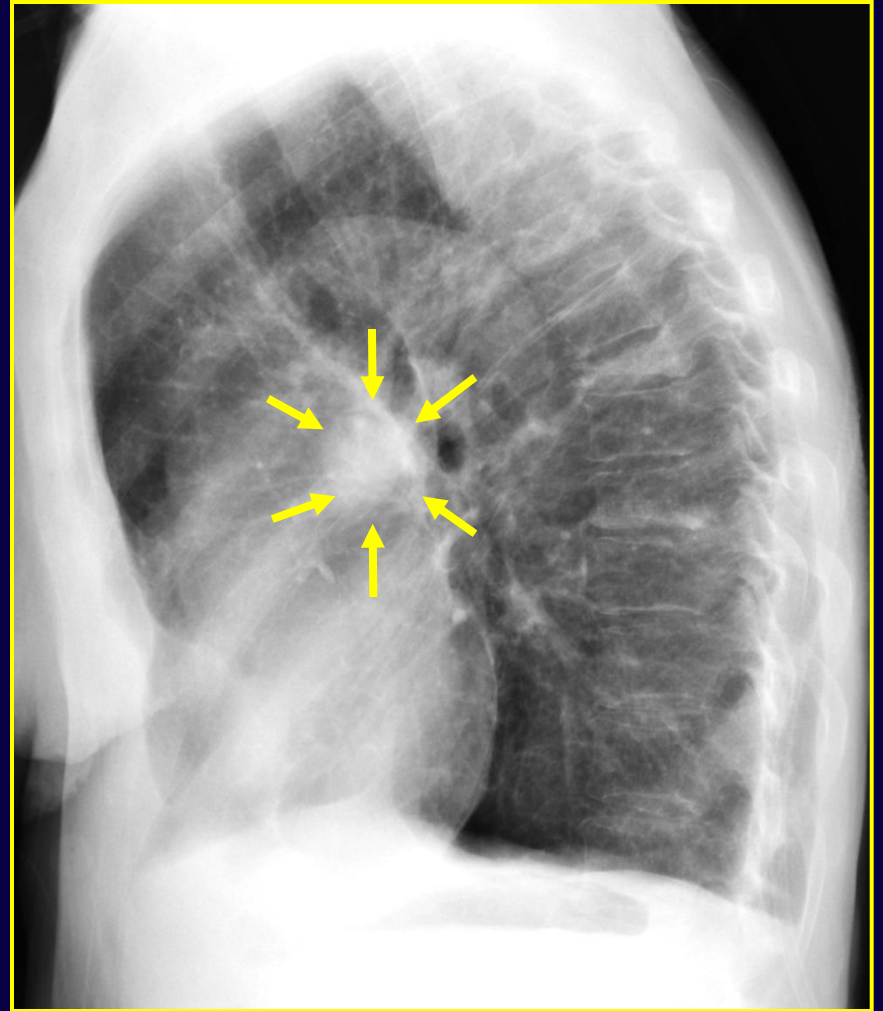
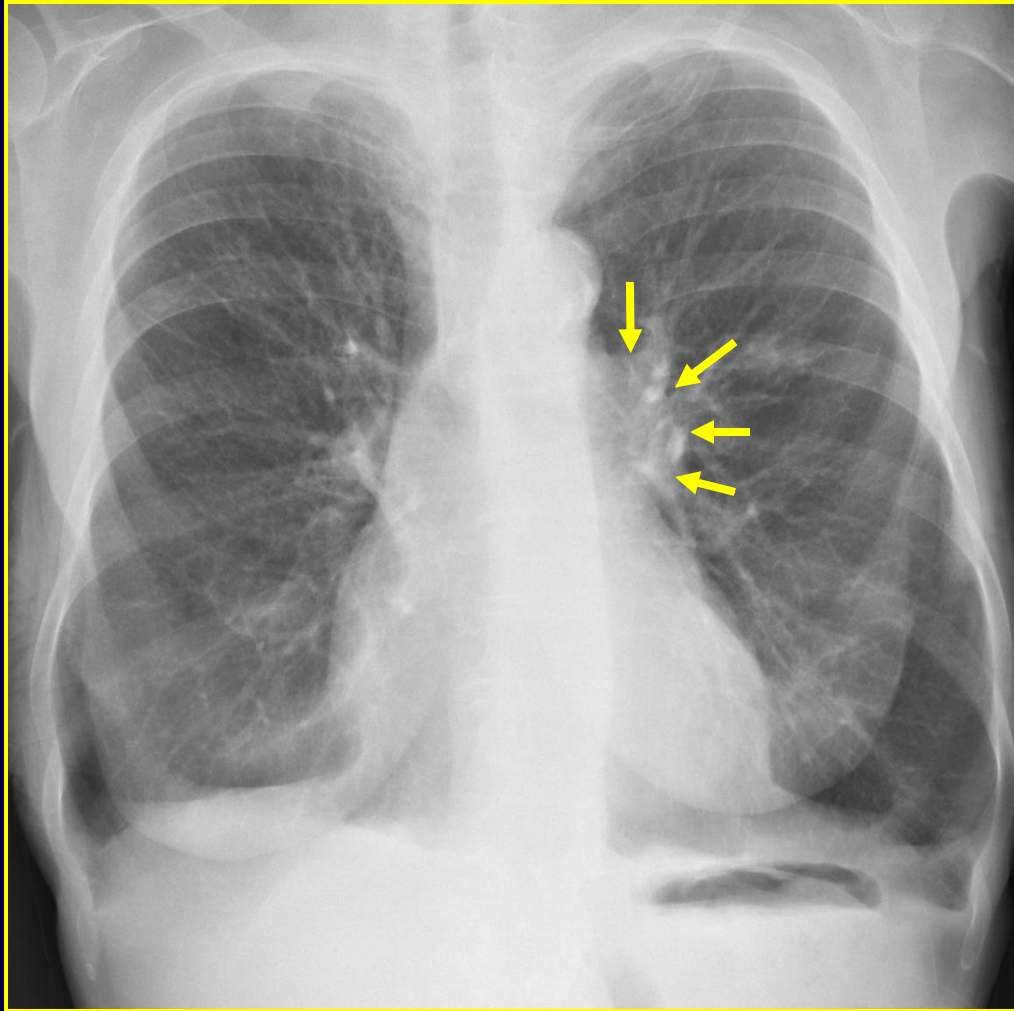


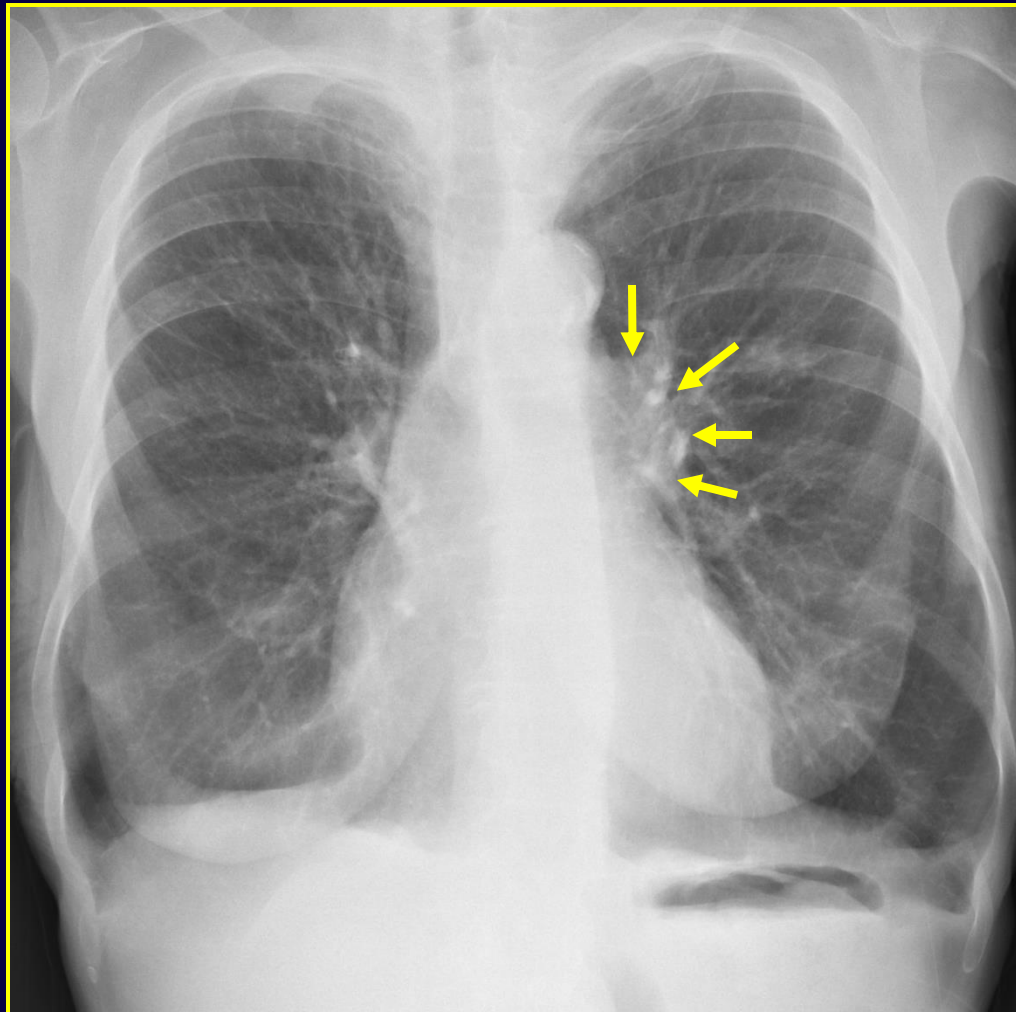


✓ aumento radiopacità
ilare dx

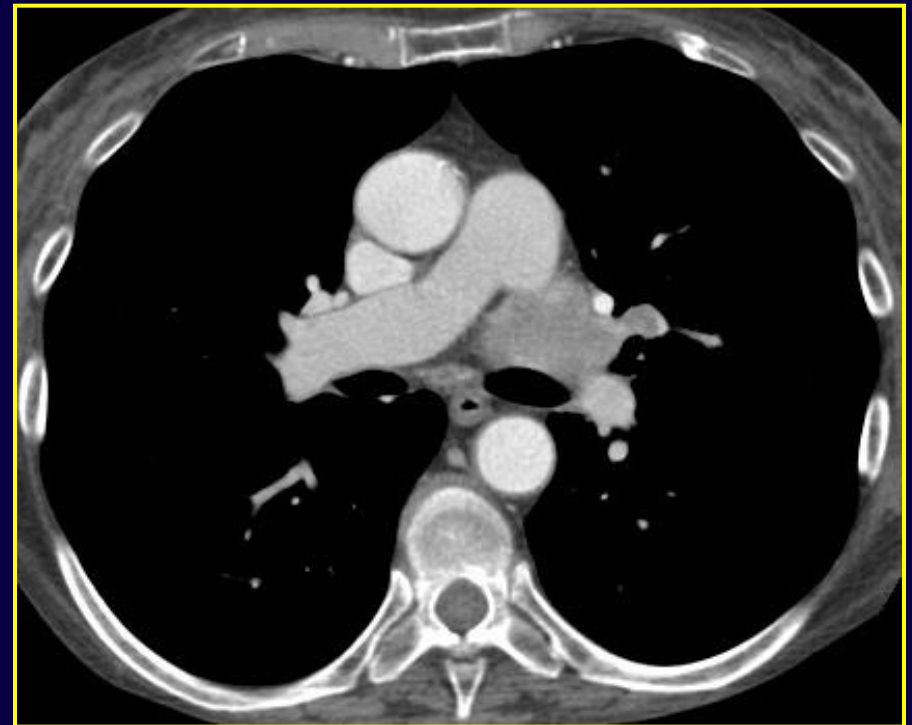


Tumore centrale LID





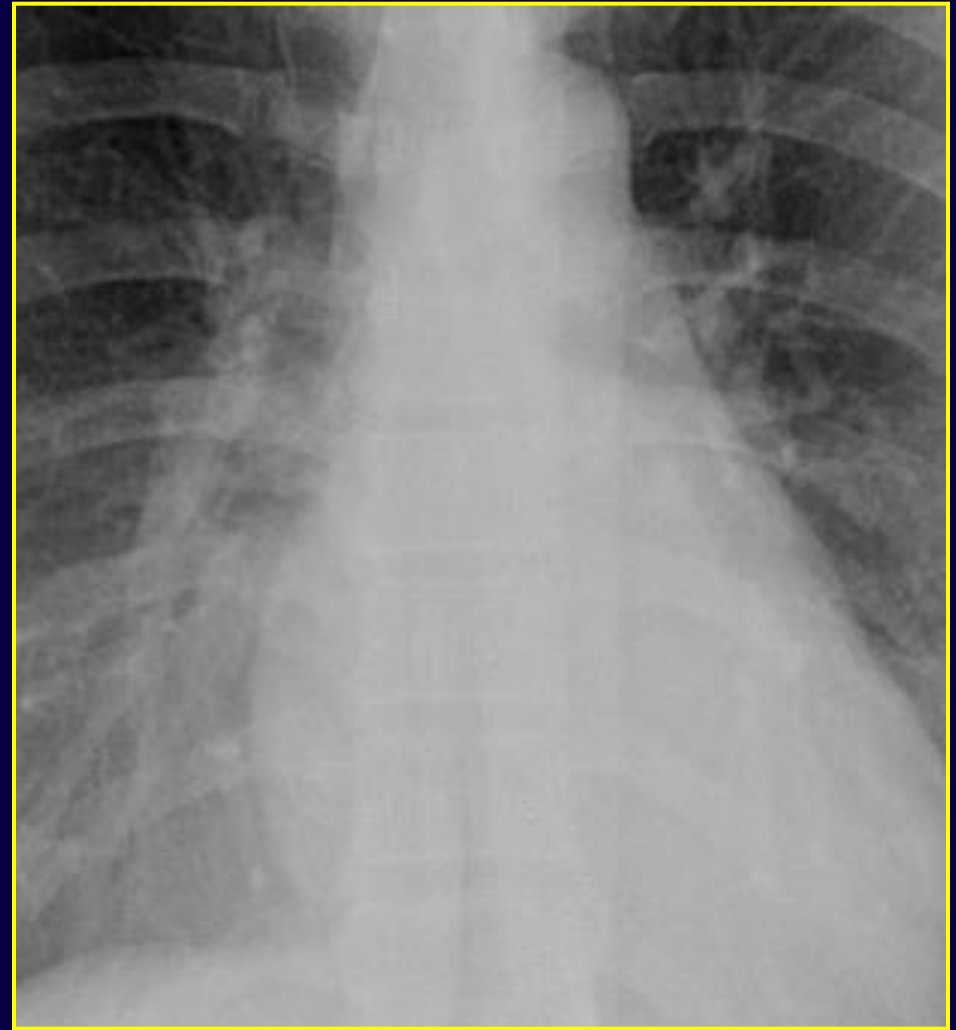
✓ aumento radiopacità
ilare sn

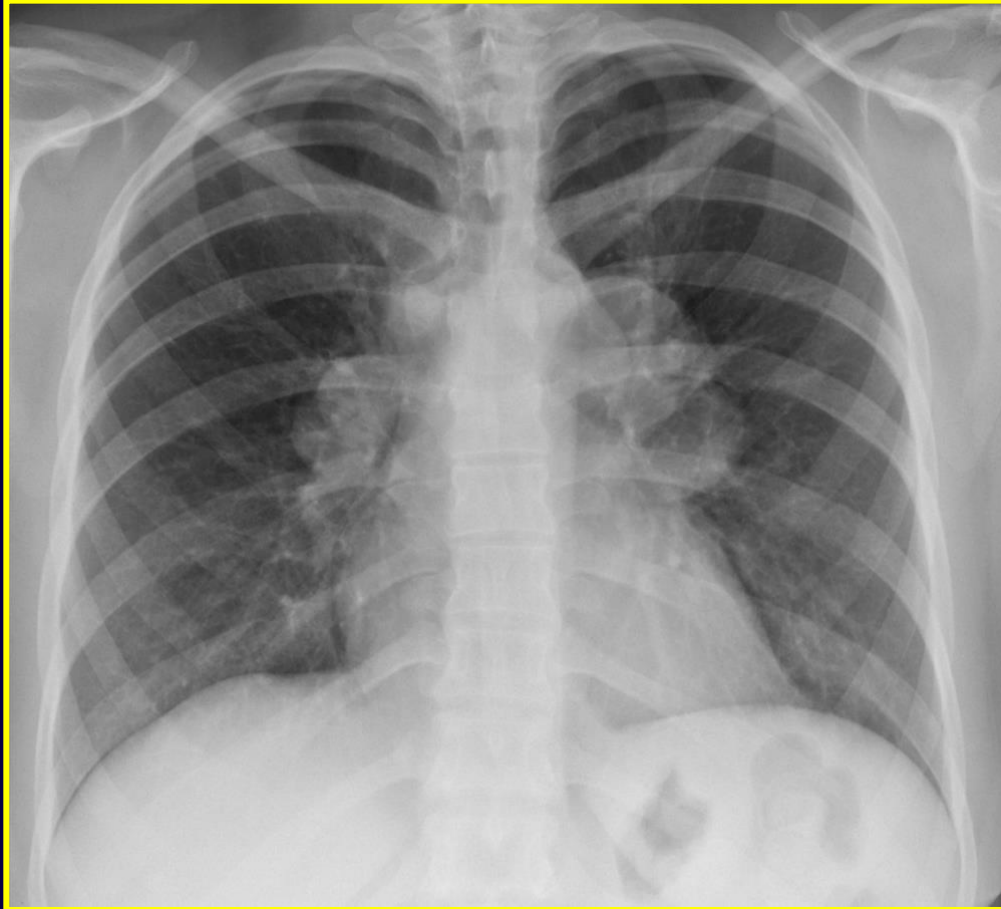


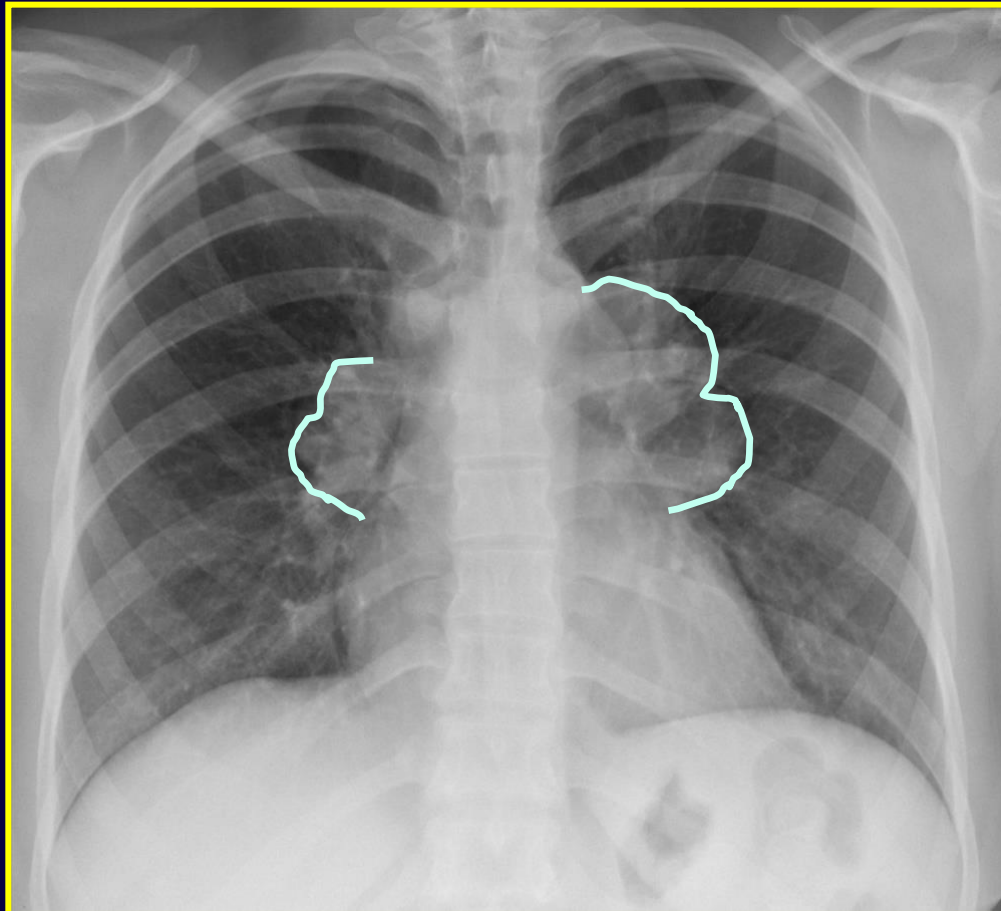
Tumore centrale sn

Valutazione ili

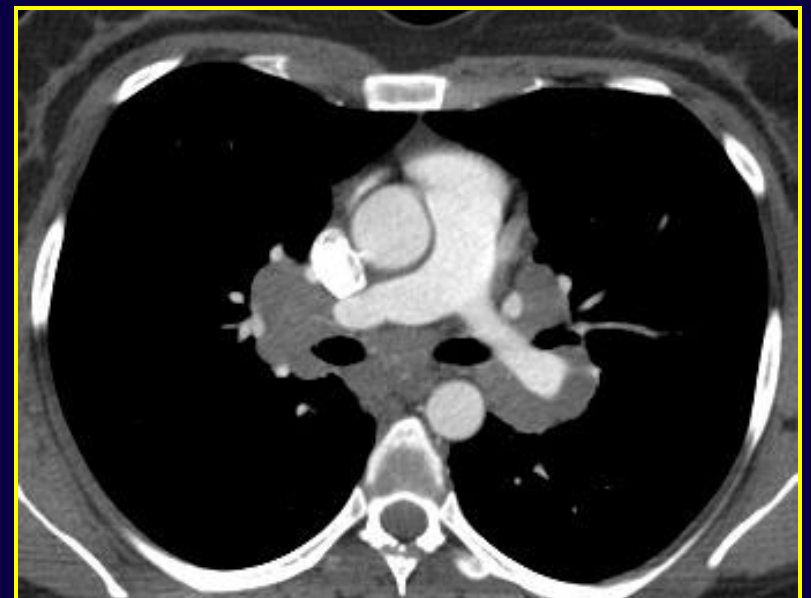
- ✓ *Dimensioni*
- ✓ *Radiopacità*
- ✓ *Forma*
- ✓ *Sede*







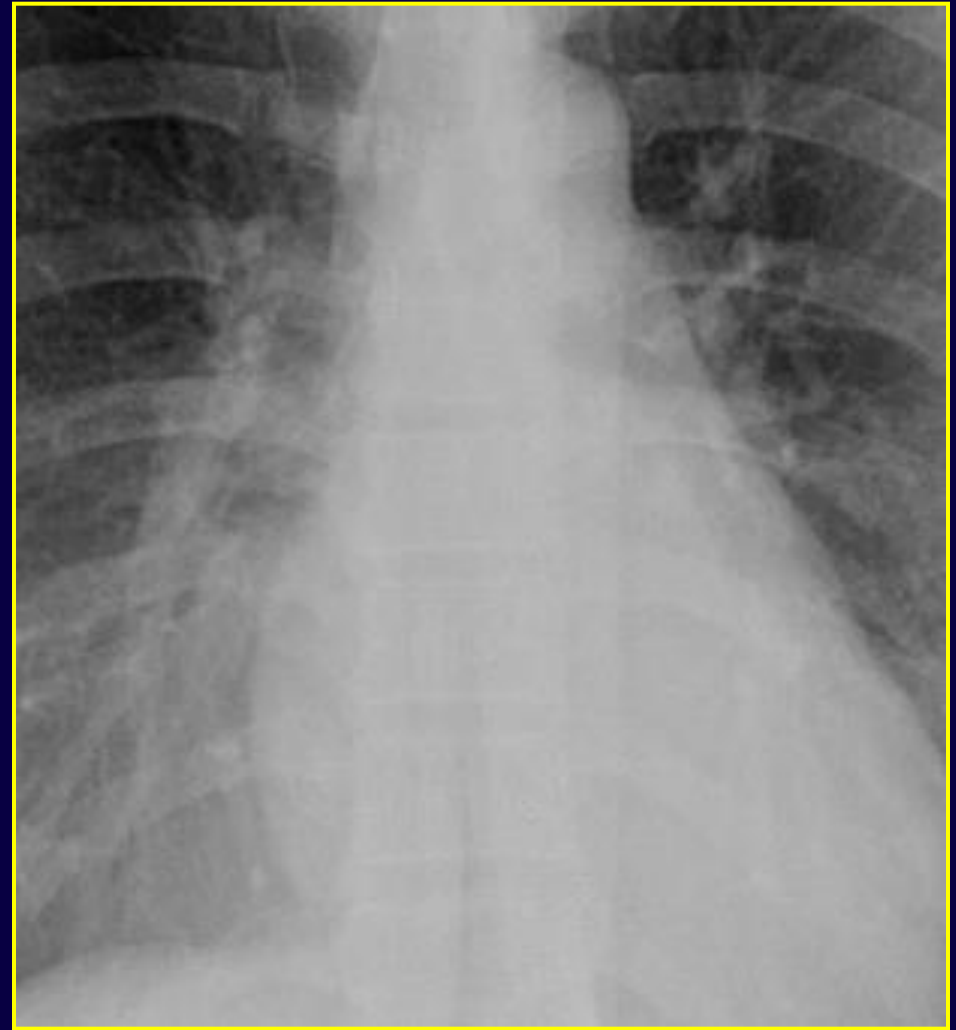
✓ ingrandimento ilare
bilaterale sostenuto
da opacità polilobulate

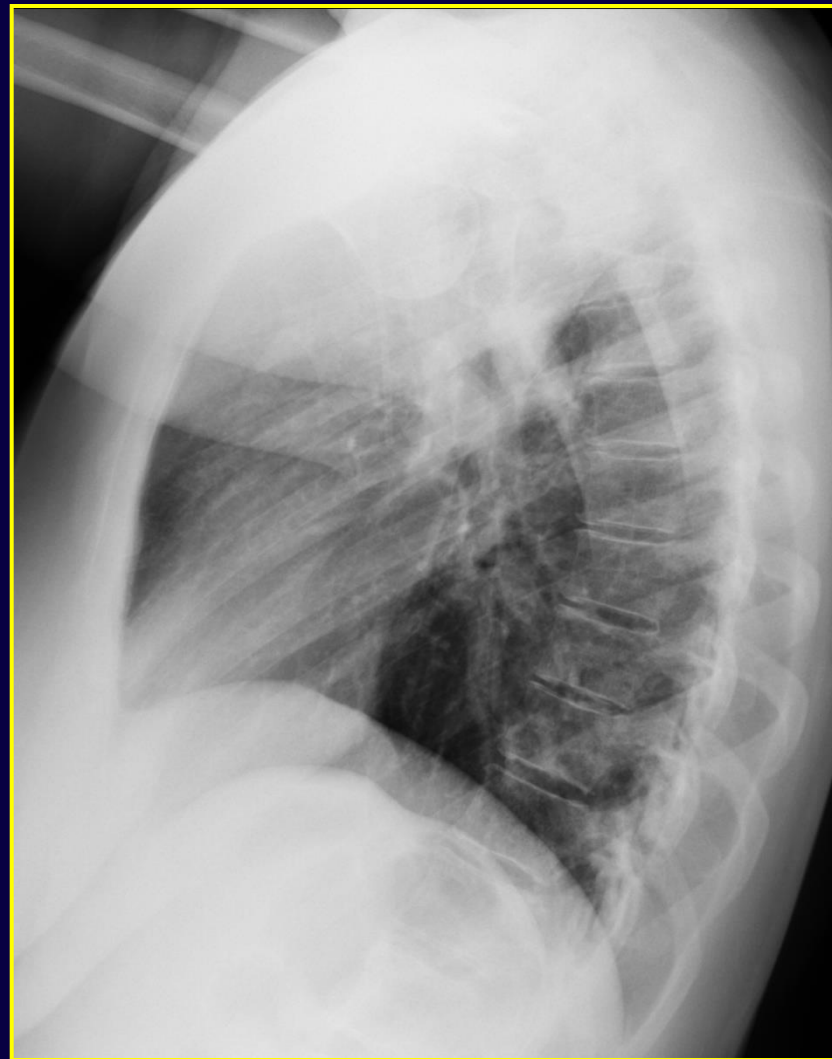
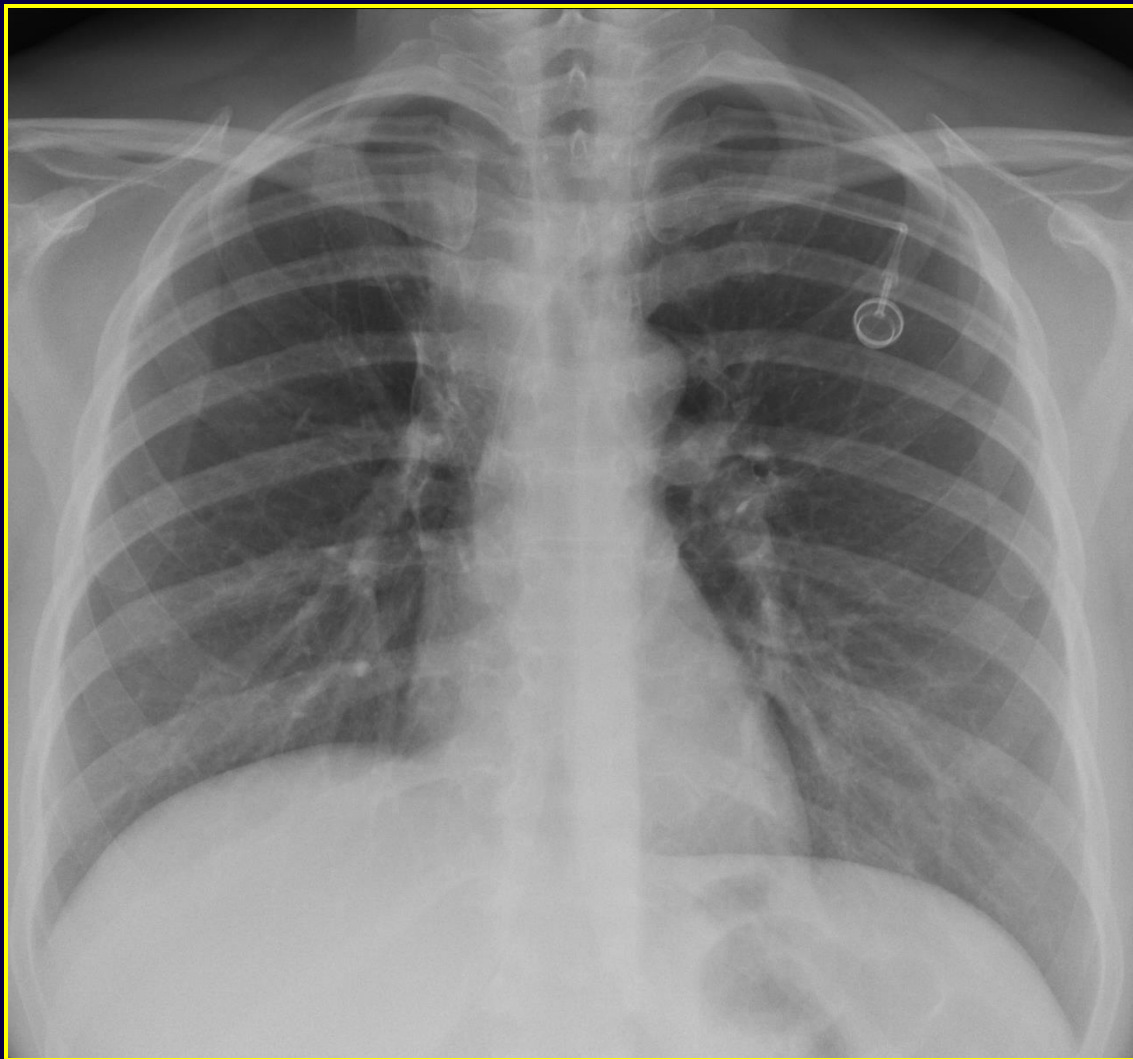


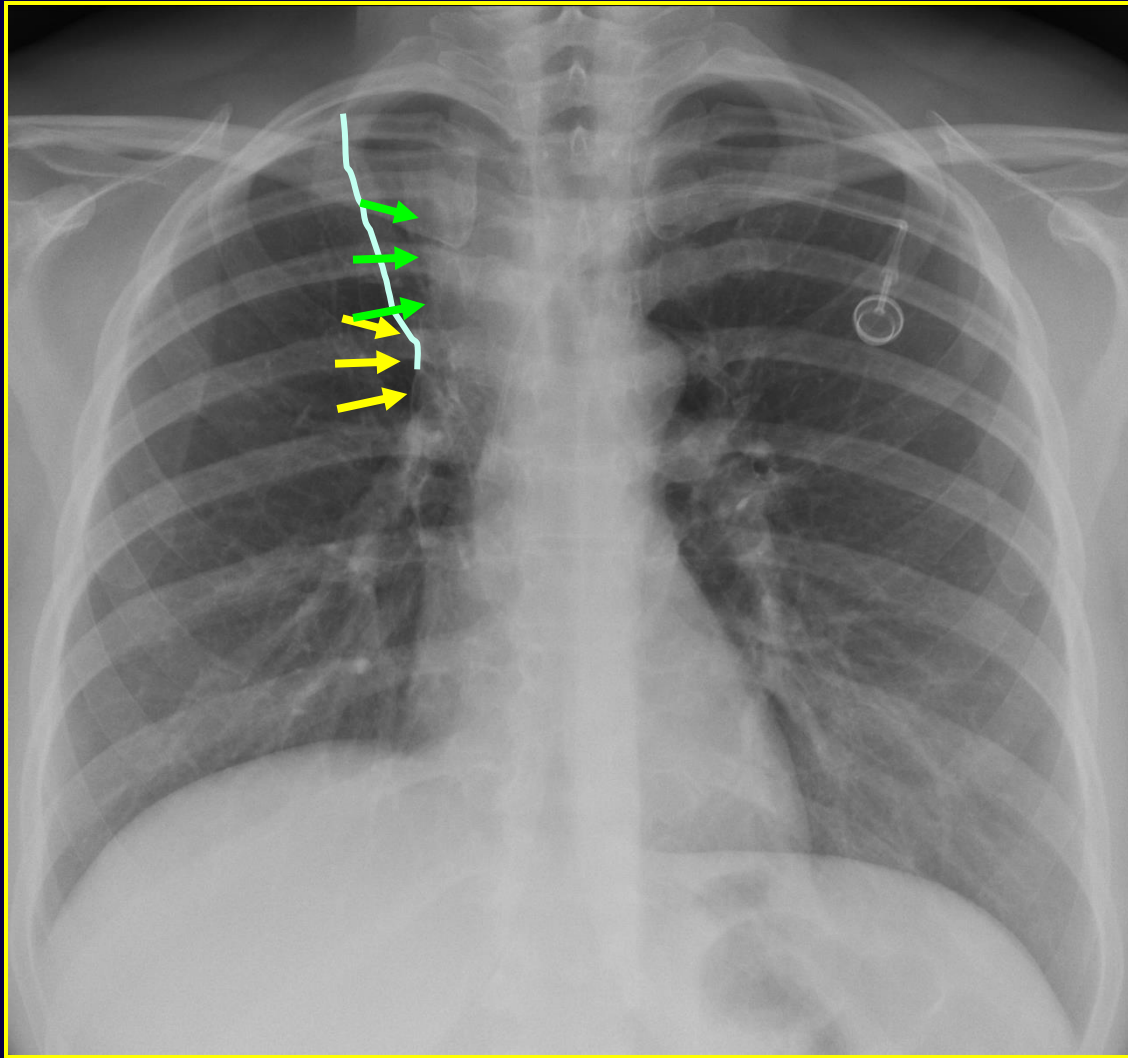
Sarcoidosi

Valutazione ili

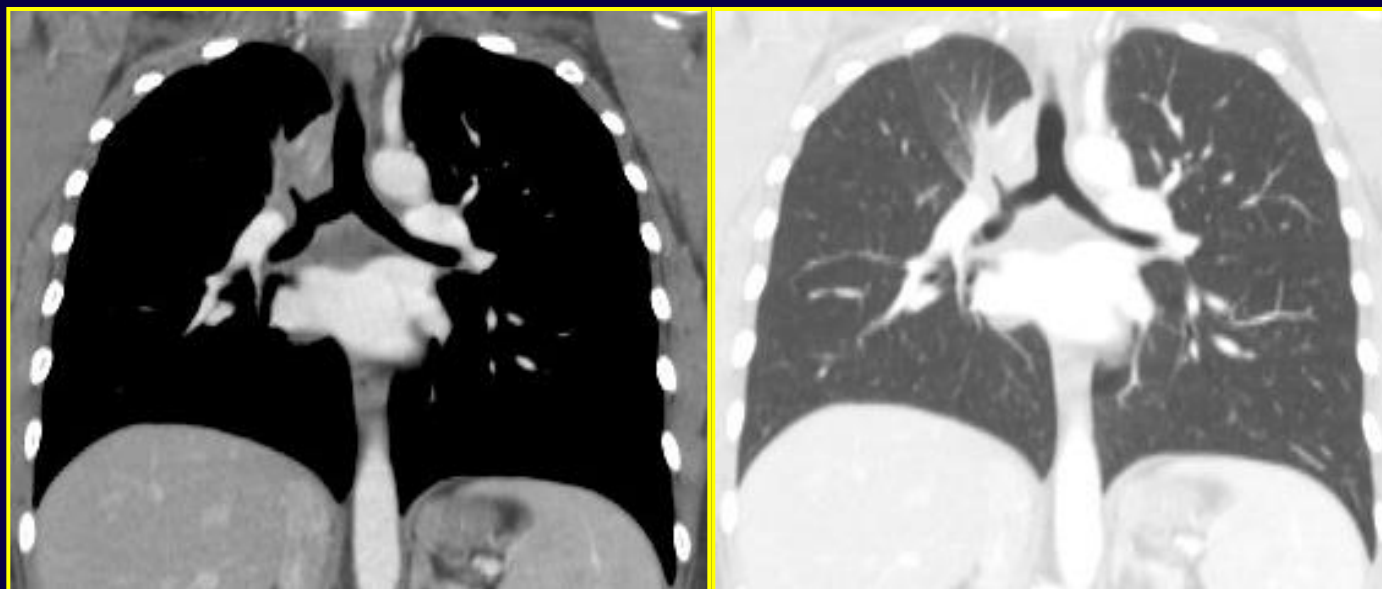
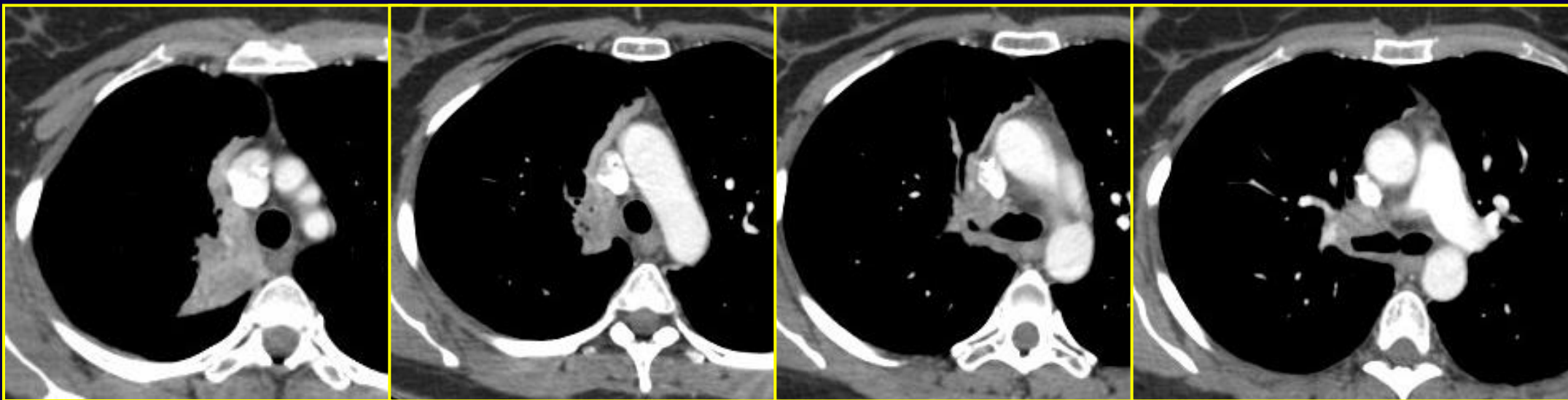
- ✓ *Dimensioni*
- ✓ *Radiopacità*
- ✓ *Forma*
- ✓ *Sede*

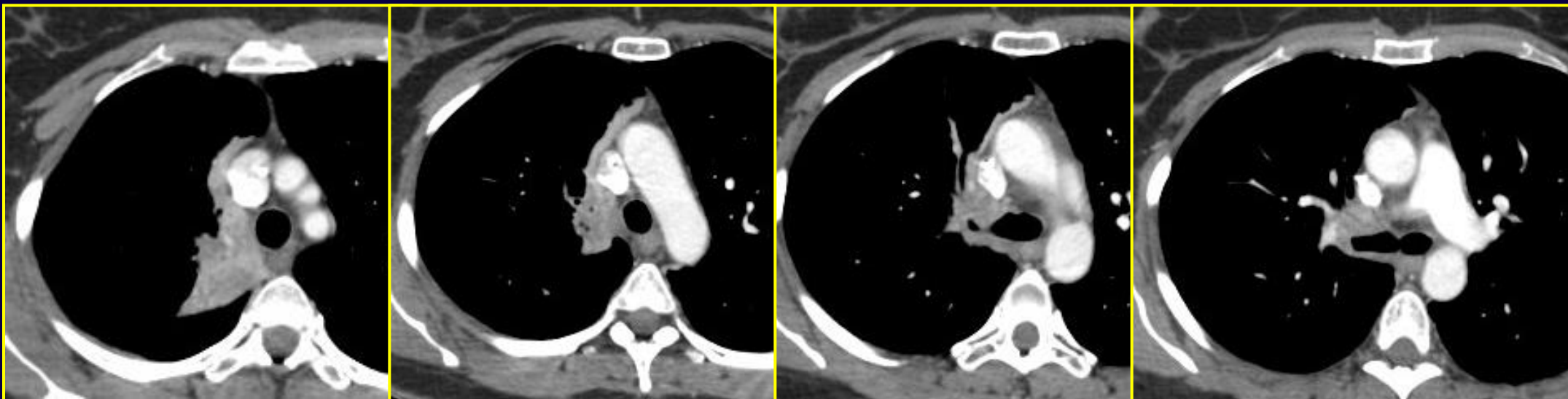






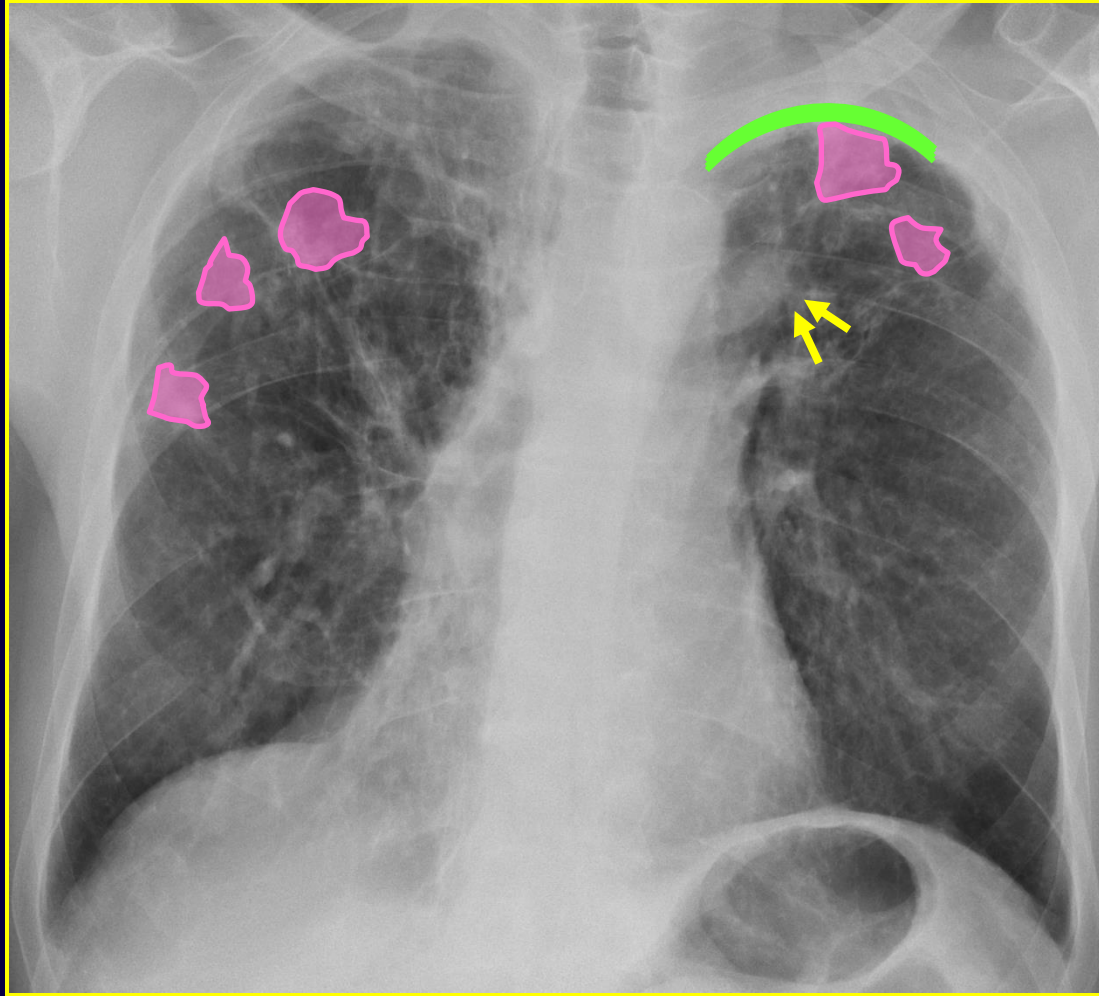
- ✓ *posizione più alta dell'ilo dx*
- ✓ *riduzione di volume del LSD*
- ✓ *opacità paratracheale dx*



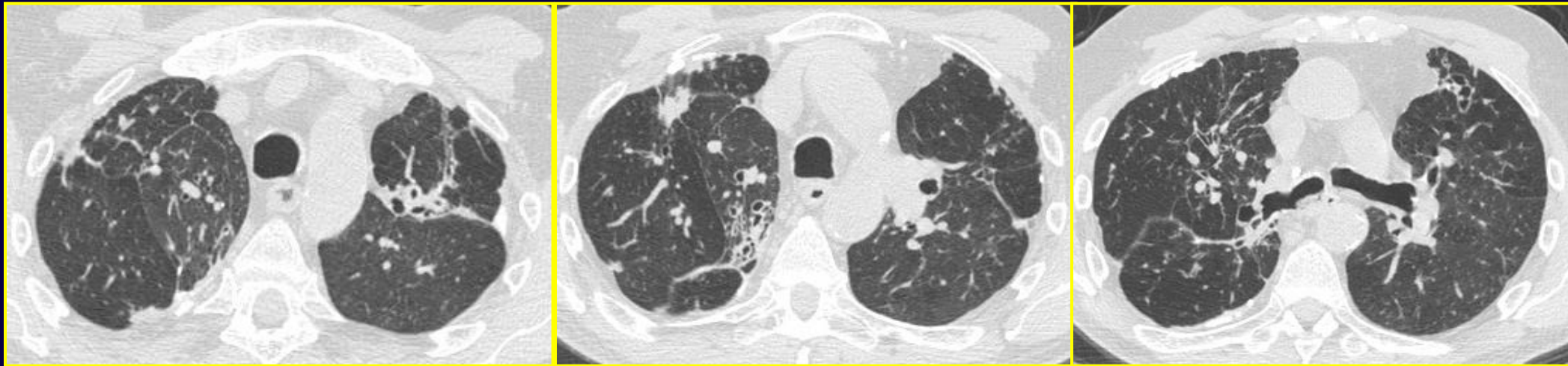
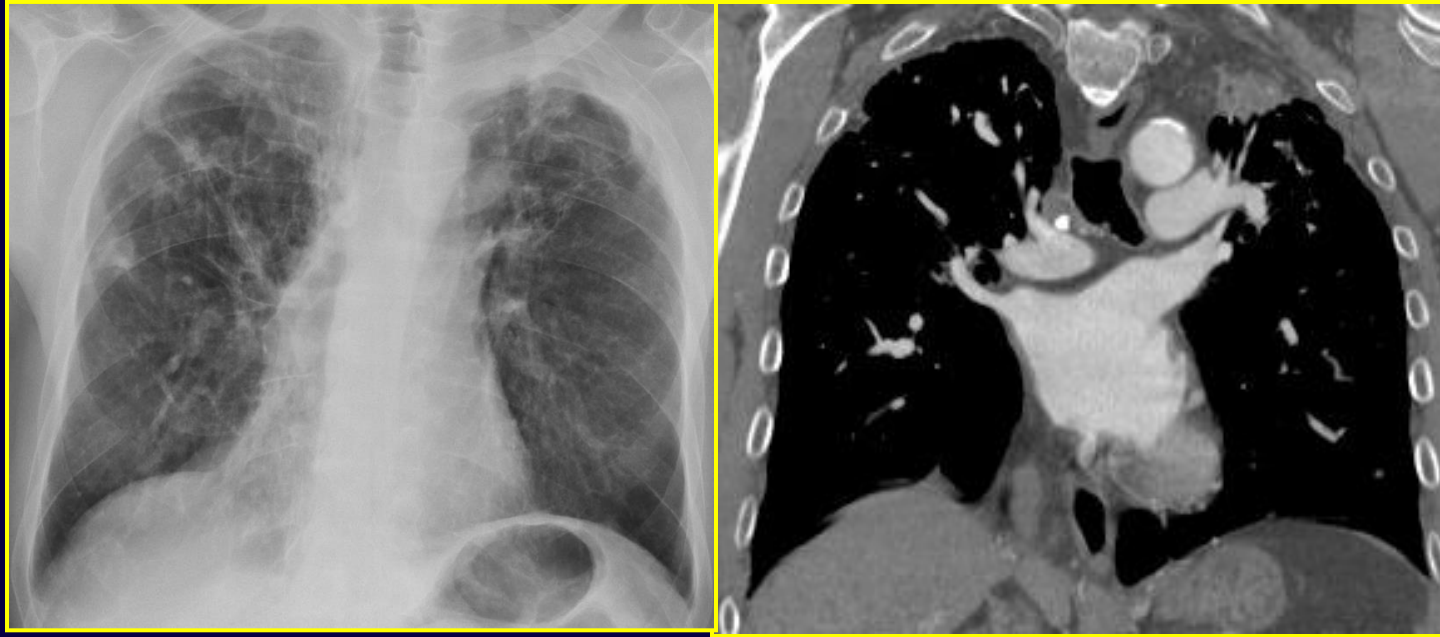


*Tumore centrale ilare dx
con collasso parziale del LSD*





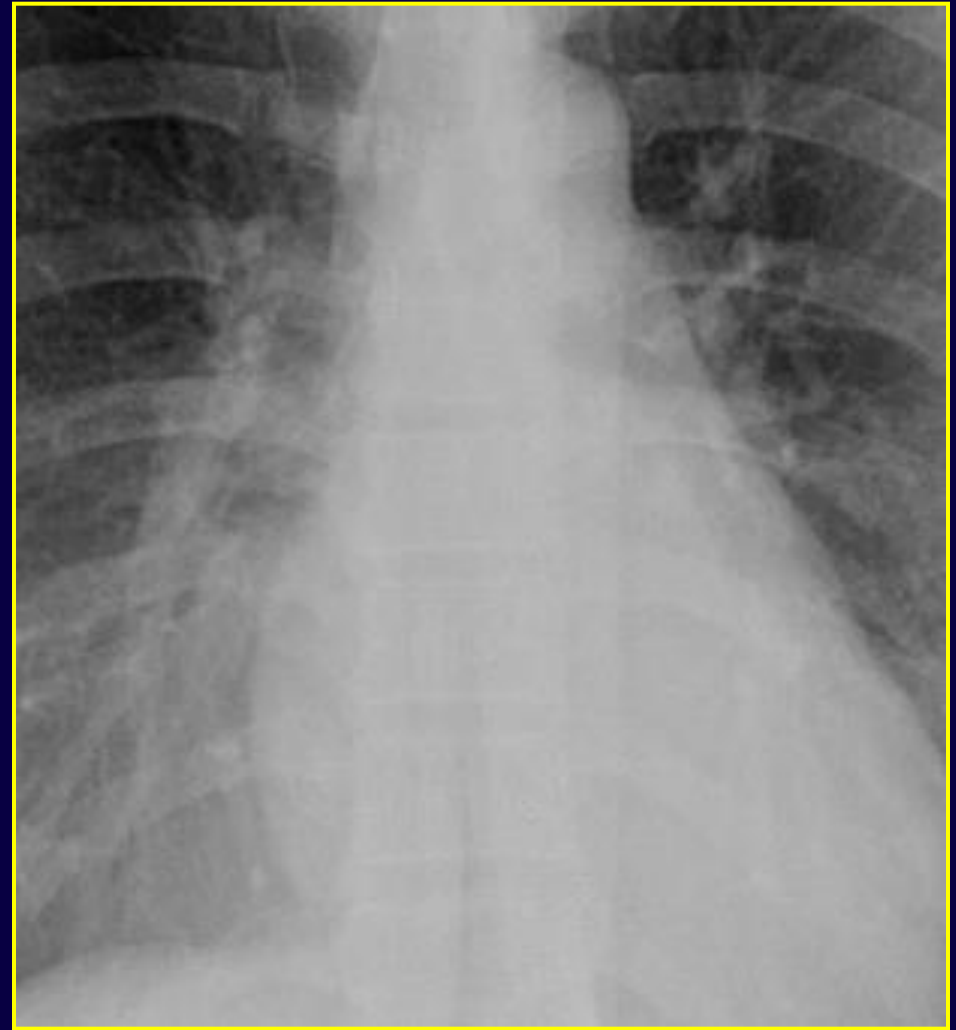
- ✓ *posizione più alta dell'ilo sn*
- ✓ *ispessimento pleurico apicale sn*
- ✓ *opacità e strie fibro-cicatrizziali nei lobi superiori*



Esiti TBC

Valutazione ili

- ✓ *Dimensioni*
- ✓ *Radiopacità*
- ✓ *Forma*
- ✓ *Sede*



COMPATTO

compatto

[com-pàt-to]

A *agg.*

1 Strettamente unito nelle sue parti: legno, tessuto *c.*; *le schiere combattevano compatte; la folla rimase compatta*

2 *fig.* Unito, concorde nei sentimenti, nelle aspirazioni, nell'azione: *il popolo si levò c. contro il tiranno; un partito politico c.*



STAMPA

PASTOSO

pastoso

[pa-stó-so]

agg.

1 Che ha la morbidezza di una pasta: *materia pastosa come cera; terra grassa e pastosa*

2 *fig.* Che è privo di asprezza; morbido, delicato: *tinte, toni pastosi*

|| *Vino pastoso, dolce, abboccato, di sapore delicato*

|| *Voce pastosa, piena e calda*



STAMPA

- *evitare utilizzo dei termini "compatto" e "pastoso"*
- *corretta descrizione e interpretazione delle alterazione degli ili polmonari*

